

# 2007-2008

# Staff

# Telephone

# Directory

Staff e-mail addresses are the first seven characters of the staff member's last name and their first initial. For example, John Smith would be smithj@newtrier.k12.il.us. Look for our new, fully searchable and interactive staff directory on our new web site this Spring.



**NEW  
TRIER**

TOWNSHIP  
HIGH SCHOOL  
DISTRICT 203

Northfield/Winnetka, IL

### Campus Key

Commuter .....	(C)
Northfield Campus .....	(N)
Winnetka Campus .....	(W)

### Personal Calls

Although there are times when it is necessary to make personal calls during work hours, all New Trier employees are asked to keep the number and the length of these type of calls to a minimum.

**Dial 9 to access an outside line. Calls within the 847, 312, 630, 708, 773 and 815 area codes can be made by everyone, free of charge. Any personal calls outside of these area codes are considered long distance and must be charged to personal calling cards.**

### Emergency

Fire .....	(9) 911
Police .....	(9) 911
Rescue Squad .....	(9) 911
Emergency Room (Evanston Hospital) .....	847-570-2111
Health Services	
<b>Emergency</b> .....	<b>(N) 3000, (W) 2900</b>
Northfield Campus .....	7513, 7514, 7661
Winnetka Campus .....	2111, 2110, 2109, 2108
Custodial Emergencies	
Northfield Campus .....	1463
Winnetka Campus .....	2073
Maintenance Emergencies	
Northfield Campus .....	1461
Winnetka Campus .....	2074

### FAX MACHINE NUMBERS

<u>Northfield Campus</u>		<u>Winnetka Campus</u>	
Attendance Office (All campus-main) .....	784-7500	Athletic Office .....	446-8247
Associate Superintendent .....	784-3115	Attendance (All campus-main) .....	501-6400
Athletic Office .....	784-3112	Curriculum and Instruction .....	501-6493
Business Office .....	446-0875	Health Services .....	501-2398, 501-6489
Communications Office .....	446-0875	Help Desk .....	784-2399
Health Services .....	784-3113	Human Resources .....	501-6420
Help Desk .....	784-7795	Library .....	446-6988
Library .....	784-3114	Performing Arts .....	784-6690
New Trier Extension .....	446-7346	Physical Plant Services .....	501-5318
Performing Arts .....	784-3118	Post-High School Counseling .....	501-6466
Physical Plant Services .....	446-7346	Principal's Office .....	446-4759
Science Department .....	784-3117	Science .....	501-6408
Special Education .....	784-3116	Special Education (Department) .....	501-6472
Superintendent's Office .....	446-0874	.....	501-6813
Transportation (Bus; Shuttle) .....	784-3119	Special Education (Director) .....	501-6481
		Speech and Theatre .....	501-6469
		Technology .....	501-6488

# District Leadership

## Board of Education

Carol F. Ducommun, President	5006
James B. Koch	5002
Stephen J. Malkin, Vice President	5003
Robert A. Merrick	5008
Susan B. Noyes	5007
Wendy M. Serrino	5001
Peter Ullman	5005

*The above numbers are voice-mail only. If calling from outside of the District telephone system, please dial 847.446.7000 and ask for the extension, or 847.501.6464 and dial the extension number when prompted.*

## District Administration

### Superintendent

Linda Yonke, Ed.D	6109
Secretary, Lou Anne Kelly	6108

### Associate Superintendent

Don Goers	3408
Secretary, Joan Wideman	3409

### Assistant Superintendent for Curriculum and Instruction

Cindy Jaskowiak	2270
Administrative Asst., Linda Jackim	2271

### Director of Communications

Laura Blair	2666
Assistant, Mary Patchell	2667

### Director of Human Resources

Larry Loebert	2211
Administrative Asst., Laura Stiles	2361

### Director of Research and Academic Services

Tim Dohrer, Ph.D (interim)	2207
Administrative Asst., Sue Santelli	2206

### Director of Special Education

Laurel Burman	2205
Administrative Asst., Terri Costabile	2204

### Director of Technology

Chris Johnson	2360
Technology Project Specialist, Lisa Kojalovitch	2370

### Director of Physical Plant Services

John Neiweem	2071
Secretary, Jamie Sosa	2072

### Director of Business Services

Michele Slav	2660
Secretary, Joan Wideman	3409

## District Programs

Alumni Relations	
c/o Communications, Laura Blair	2666
Coordinator, Mary Patchell	2667
New Trier Extension, Jaye Golanty	6380
Program Assistant, Melanie Calhoun	6383
New Trier Educational Foundation	
Executive Director, Marianne Breen	2346
Assistant, Mary Patchell	2667
Sodexo Cafeteria Services	
Liz Wood (Northfield)	3071
John Strzok (Winnetka)	2285

## Northfield Campus

7 Happ Road  
Northfield, Illinois 60093  
847.446.7000

### Campus Administration

#### Principal, Northfield Campus and Director of Student Services

Jan Borja	7501
Secretary, Michele Meucci	7502

Assistant Principal, Tim Hayes	7503
Administrative Asst., Dolores Abrams	7504

### Adviser Chairs

<u>Freshman:</u>	
Marla Tracy	7505
Josh Seldess	7506
Adviser Chair Asst., TBD	7507

### Department Coordinators

Art, Steve Gaeth	7690
Department Asst., Judy Gordon	7611
English, Ed Zwirner	7550
Department Asst., Kathy Heublein	7551
Kinetic Wellness, Augie Fontanetta	7738
Department Asst., Natalia Katsinis	7517
Library, Anne O'Malley	7760
Mathematics, Paul Sally	7590
Department Asst., Denise DiClementi	7591
Modern & Classical Languages	
Bobbi Price	7610
Department Asst., Judy Gordon	7611
Music, Tim Estberg	7705
Department Asst., Barbara Kelly	7521
New Trier Learning Center, Deb Kind	6350
Department Asst., Shelly Fowler	6351
Practical Arts, Jason Boumstein	7696
Department Asst., Judy Gordon	7611
Science, Brian Woodruff	7630
Department Asst., Denise DiClementi	7591
Social Studies, Meg Beeler	7570
Department Asst., Kathy Heublein	7551

Social Work, Tiffany Myers	7509
Department Asst., TBD	7507

Special Education, Pat Savage-Williams	7660
Department Asst., Debbie Neumayer	7661

Speech and Theatre, Tim Estberg	7705
Department Asst., Barbara Kelly	7521

### Student Services Leadership

Academic Assistance Coordinator, Sandy Schwartz	7771
Activities Coordinator, Dan Gross	7518
Department Asst., Natalia Katsinis	7517
Athletics Coordinator, Robert Ruiz	7516
Department Asst., Natalia Katsinis	7517
Health Services	
School Nurse, Joan Liess	7513
Department Asst., Debbie Neumayer	7661
Performing Arts Coordinator, Nina Lynn	7520
Department Asst., Barbara Kelly	7521

## Winnetka Campus

385 Winnetka Avenue  
Winnetka, Illinois 60093  
847.446.7000

### Campus Administration

#### Principal, Winnetka Campus and Director of Administrative Services

Debra Stacey, Ph.D.	2200
Secretary, Mary Timko	2201

Athletic Director, Randy Oberembt	2226
Administrative Asst., Nancy Schroeder	2225

#### Assistant Principal for Administrative Services

Matt Ottaviano	2215
Administrative Asst., Karen Pedersen	2214

#### Assistant Principal for Student Services, Katherine Urkovich

Administrative Asst., Lucy Harrison	2216
-------------------------------------	------

### Adviser Chairs

<u>Sophomore:</u>	
Sharon Weiner	2231
Scott Williams	2229
Adviser Chair Assistant, Peggy Ono	2228

### Junior:

Gail Gamrath	2230
Dan Mortier	2220
Adviser Chair Assistant, Sue Buck	2224

### Senior:

Cindee Scott	2223
Tom Tebbe	2232
Adviser Chair Assistant, Eileen Nash	2246

(continued)



**New Trier Township High School District 203  
Administrative Responsibilities 2007-2008**

<p align="center"><b>Associate Superintendent</b> <i>Don Goers</i></p> <ul style="list-style-type: none"> <li>• Business Services</li> <li>• Department of Technology</li> <li>• Physical Plant Services</li> <li>• New Trier Extension Program</li> <li>• Investments</li> <li>• Contract Negotiations</li> </ul>	<p align="center"><b>Assistant Superintendent</b> <i>Cindy Jaskowiak</i></p> <ul style="list-style-type: none"> <li>• Curriculum and Instruction</li> <li>• Research</li> <li>• Testing/Assessment</li> <li>• Professional Development</li> <li>• Department Chairs/Coordinators</li> <li>• Instructional Technology</li> </ul>	<p align="center"><b>Winnetka Campus Principal Director of Administrative Services</b> <i>Debbie Stacey</i></p> <ul style="list-style-type: none"> <li>• Winnetka Campus Principal</li> <li>• Administrative Services</li> <li>• Student Engagement: Activities, Athletics, Performing Arts</li> <li>• Parents' Association</li> </ul>	<p align="center"><b>Northfield Campus Principal Director of Student Services</b> <i>Jan Borja</i></p> <ul style="list-style-type: none"> <li>• Northfield Campus Principal</li> <li>• Student Services: Adviser Program, Social Work, Special Programs (Diversity, Service Learning, NAMES)</li> </ul>
--	---	--	---

<p align="center"><b>Director of Technology</b> <i>Chris Johnson</i></p> <ul style="list-style-type: none"> <li>• Student Mgmt. System</li> <li>• Hardware/Software</li> <li>• Network/Infrastructure</li> <li>• Tech. Staff Development</li> <li>• Labs &amp; Multimedia</li> <li>• Instructional Technology</li> </ul>	<p align="center"><b>Director of Physical Plant Services</b> <i>John Neiweem</i></p> <ul style="list-style-type: none"> <li>• Facilities</li> <li>• Grounds</li> <li>• Capital Projects</li> <li>• Health-Life-Safety Projects</li> <li>• Energy Management</li> <li>• Facilities Rentals (Non-Athletic)</li> </ul>	<p align="center"><b>Director of Special Education</b> <i>Laurel Burman</i></p> <ul style="list-style-type: none"> <li>• Special Ed. Program</li> <li>• Psychology</li> <li>• Speech Pathology</li> <li>• NSSED</li> <li>• Bridges Program</li> </ul>	<p align="center"><b>Director of Research &amp; Academic Services</b> <i>Tim Dohrer</i></p> <ul style="list-style-type: none"> <li>• Testing Program</li> <li>• Test Make-up Center</li> <li>• Research/Data Analysis</li> <li>• Grants</li> <li>• NSERVE</li> </ul>	<p align="center"><b>Director of Human Resources</b> <i>Larry Lobert</i></p> <ul style="list-style-type: none"> <li>• Recruitment/Hiring</li> <li>• Retention/Dismissal</li> <li>• Substitute Teachers</li> <li>• Support Staff Develop.</li> <li>• Personnel Records</li> <li>• HR Issues &amp; Contracts</li> <li>• Benefits/Wellness</li> </ul>	<p align="center"><b>Director of Communications</b> <i>Laura Blair</i></p> <ul style="list-style-type: none"> <li>• Print Publications</li> <li>• Web Communications</li> <li>• Community Relations</li> <li>• Alumni Relations</li> <li>• Media Relations</li> <li>• Publicity</li> <li>• TV Programming</li> </ul>
--	---	---	--	--	--

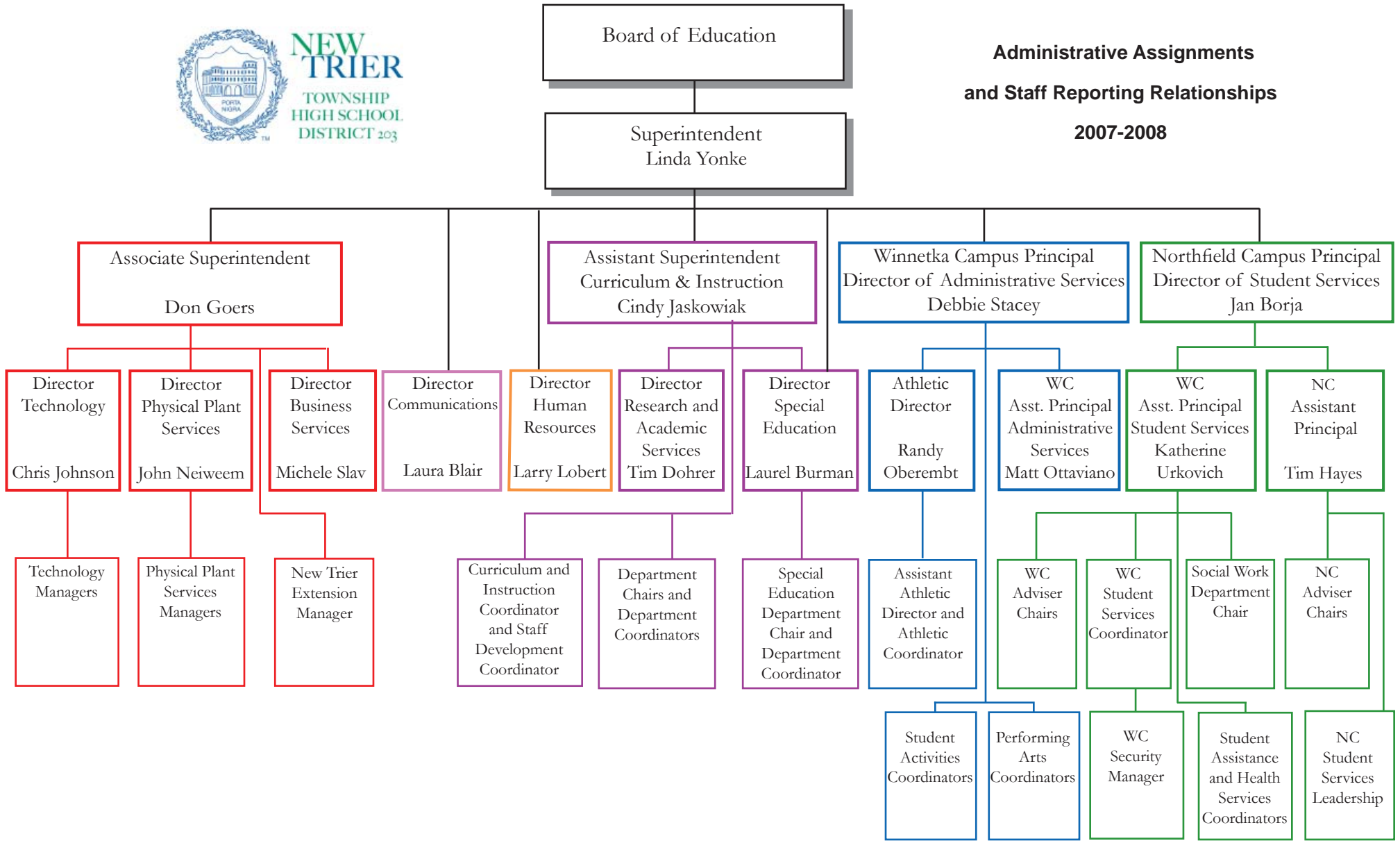
<p align="center"><b>Director of Business Services</b> <i>Michele Slav</i></p> <ul style="list-style-type: none"> <li>• Financial Reports</li> <li>• Budget Administration</li> <li>• Annual Audits</li> <li>• Business Services: Payroll, Benefits, etc.</li> <li>• Grant Reporting/Processing</li> </ul>	<p align="center"><b>Athletic Director</b> <i>Randy Oberembt</i></p> <ul style="list-style-type: none"> <li>• All Athletic Programs</li> <li>• Hiring and Supervising Coaches</li> <li>• Booster Club</li> <li>• Athletic Equipment, Officials, Schedules, Transportation</li> <li>• Eligibility</li> <li>• Intramurals</li> <li>• Rowing Club</li> <li>• Facilities Rentals (Athletic)</li> </ul>	<p align="center"><b>WC Assistant Principal Administrative Services</b> <i>Matt Ottaviano</i></p> <ul style="list-style-type: none"> <li>• Administrative Services</li> <li>• Master Schedule/Special Schedules</li> <li>• Bookstore/Registrar/Mailroom</li> <li>• Emergency Preparedness</li> <li>• Supervision Assignments</li> <li>• New Student Registration</li> <li>• Financial Assistance</li> </ul>	<p align="center"><b>WC Assistant Principal Student Services</b> <i>Katherine Urkovich</i></p> <ul style="list-style-type: none"> <li>• Adviser Program</li> <li>• Social Work</li> <li>• Student Assistance</li> <li>• Discipline</li> <li>• Guidance Teams</li> <li>• GAP/TAT</li> <li>• Special Adviser Room Programs</li> <li>• Health Services</li> <li>• Security</li> </ul>	<p align="center"><b>NC Assistant Principal</b> <i>Tim Hayes</i></p> <ul style="list-style-type: none"> <li>• Adviser Program and Special Adviser Room Programs</li> <li>• Northfield Master Schedule</li> <li>• Discipline</li> <li>• Student Assistance</li> <li>• Health Services</li> <li>• Security/Emerg. Preparedness</li> <li>• Social Work</li> <li>• Guidance Team</li> <li>• GAP/TAT</li> </ul>
--	--	---	--	--

<p align="center"><b>Curriculum and Instruction Coordinator, Greg Harris</b></p> <ul style="list-style-type: none"> <li>• Certified Staff Professional Development</li> <li>• Multicultural Education/ESL Programs</li> <li>• Supervision of Special Programs (SILC, Senior Project, Projects of Excellence, Literacy)</li> <li>• Instructional Growth Grants</li> <li>• NSERVE</li> </ul>	
--	--

<p align="center"><b>Student Services Coordinator, Chris Pearson</b></p> <ul style="list-style-type: none"> <li>• Attendance and Truancy</li> <li>• Summer School Coordination and Schedule</li> <li>• GAP</li> <li>• Scholarship Committee</li> <li>• Student Exchange Programs</li> <li>• Health Services</li> <li>• Parking</li> <li>• Campus Security</li> </ul>	
--	--



**Administrative Assignments  
and Staff Reporting Relationships  
2007-2008**



**NC = Northfield Campus  
WC = Winnetka Campus**

## 2007-2008 STAFF TELEPHONE DIRECTORY

Last Name	Work Phone	Department	Campus	Room
ABDULAZIZ LATEEF	847-784-7794	TECHNOLOGY	N	D224
ABRAMS DOLORES	847-784-7504	ASST PRINCIPAL ADMINISTRATION	N	A210
ACKERMANN JOHN	847-784-2073	PLANT OPERATIONS	W	125
ADAMS APRIL	0	ASST PRINCIPAL ADMINISTRATION	W	215
ALBERT SAMANTHA	847-784-6849	SPECIAL EDUCATION	W	103
ALI MOHAMMAD	847-784-7567	SOCIAL STUDIES	N	C213
ANDERSON NANCY	847-784-6591	MATHEMATICS	W	277
ANDERSON REGINA	847-784-2292	PARAPROFESSIONAL	N	A201
ANDERSON Tom	847/784-7788	TECHNOLOGY	N	A414
ANDREWS-HUTCHINSON DAVID	847-784-2379	TECHNOLOGY	N	A412
APETEAN ANCA	847-784-7725	MUSIC	C	E125
APOSTAL DIANA	847-784-2287	SOCIAL WORK	W	268
APPLE MARY ANN	847-784-7790	TECHNOLOGY	N	A414
ARADO LINDSAY	847-784-6789	SOCIAL STUDIES	W	300
ARSENAULT BETSY	847-784-6525	ENGLISH	W	330
ASPLUND PAM	847-784-2364	TECHNOLOGY	N	A412
ATWELL JAMIE	847-784-6776	SOCIAL STUDIES	W	300
BABYAR JOANNA	847-784-6473	BUSINESS EDUCATION	W	428A
BACHMAN ARIELL	847-784-6527	ENGLISH	W	330
BACHMANN KRISTINA	847-784-6824	SPECIAL EDUCATION	W	001E
BAEB MIKE	847-784-6772	SOCIAL STUDIES	W	300
BARBE LISA	847-784-2257	PSYCHOLOGIST	W	223
BARBER CHRIS	847-784-7677	SPECIAL EDUCATION	N	D123
BARFIELD TIM	847-784-2684	TRANSPORTATION & WAREHOUSE	N	D16
BARRAZA MARIA	847-784-6669	MODERN & CLASSICAL LANGUAGES	W	232
BARRETT MARY BETH	847-784-6713	SCIENCE	W	136
BASSRAWI SHARON	847-784-6357	SPECIAL EDUCATION	W	101
BAUER MINDY	847-784-6534	ENGLISH	W	330
BECKER LOU	847-784-6812	SPECIAL EDUCATION	W	101
BEELER MEG	847-784-7570	SOCIAL STUDIES	N	C213A
BELFORD STEVEN	847-784-6850	BUSINESS EDUCATION	W	325
BELL CHRIS	847-784-3073	POLICE LIAISON	N	A224
BELL GLADYS	847-784-2292	PARAPROFESSIONAL	W	A201
BELLAMY CHRIS	847-784-2292	PARAPROFESSIONAL	W	A201
BENDER DANIEL	847-784-6653	MODERN & CLASSICAL LANGUAGES	W	232
BERG KIMBERLY	847-784-6519	ENGLISH	W	332
BERLIANT ERIC	847-784-7558	ENGLISH	N	C211
BERLIN BOB	847-784-6612	MATHEMATICS	W	277
BIRDWELL LESLIE	847-784-6517	ENGLISH	W	332
BIRKS MARY LOUISE	847-784-6501	ENGLISH	W	332
BLAIR DAFTAN	847-784-1463	PLANT OPERATIONS	N	A105
BLAIR LAURA	847-784-2666	COMMUNICATIONS	N	A02
BLAIR YVONNE	847-784-2661	BUSINESS SERVICES	N	A406
BLOCK JOSH	847-784-2373	TECHNOLOGY	N	222
BLODGETT ELIZABETH	847-784-2664	BUSINESS SERVICES	N	A406
BOBROW CAROL	847-784-6554	KINETIC WELLNESS-DANCE	W	G59
BODLE WILLIAM		SPECIAL EDUCATION	W	101
BOLING KAYE	847-784-6804	SPECIAL EDUCATION	C	101
BOLOS SPIRO	847-784-6774	SOCIAL STUDIES	W	300
BOND KEVIN	847-784-7556	ENGLISH	C	C211, 332
BONHOMME MAURICE	847-784-2686	PARAPROFESSIONAL	N	D118
BORDS JESSICA	847-784-6853	SPECIAL EDUCATION	W	266
BORJA JAMES	847-784-6356	SPECIAL EDUCATION	N	C314

## 2007-2008 STAFF TELEPHONE DIRECTORY

Last Name	Work Phone	Department	Campus	Room
BORJA JAN	847-784-7501	PRINCIPAL	N	A205
BOSCACCY JEREMY	847-784-7785	TECHNOLOGY	W	404
BOUMSTEIN JASON B	847-784-7696	TECHNOLOGY EDUCATION	N	T293
BOWERS MARK J	847-784-6493	ART	W	T197
BOWLER-JOHNSON PAT	847-784-6594	MATHEMATICS	W	277
BOYD MONIQUE	847-784-6462	ART	W	T294
BRADFORD PHOEBE	847-784-2292	PARAPROFESSIONAL	W	A201
BRAUN DAVID	847-784-2252	SOCIAL WORK	W	A215
BREEN MARIANNE	847-784-2346	EDUCATIONAL FOUNDATION	N	A404
BREINER KELLY	847-787-7642	SCIENCE	N	173
BRENNAN KERRY	847-784-6790	SOCIAL STUDIES	W	300
BRENNAN RAQUELLE	847-784-2302	LIBRARY	W	320B
BRISEBOIS-KINSELLA LIETTE	847-784-6654	MODERN & CLASSICAL LANGUAGES	W	232
BRUNETTI PHIL	847-784-2397	TECHNOLOGY	W	222
BRUNO LAURA	847-784-7763	LIBRARY	N	A301
BUCK SUSE	847-784-2224	ADVISERS	W	200
BUCKINGHAM KATIE	847-784-7663	SPECIAL EDUCATION	N	D123
BURMAN LAUREL	847-784-2205	DIRECTOR SPECIAL EDUCATION	W	278
BURNS ANGELA	847-784-2303	LIBRARY	W	320A
BURNS KEELY	847-784-6613	MATHEMATICS	W	277
BURNSIDE JIM	847-784-6717	SCIENCE	W	173
BURNSIDE JOHN	847-784-6718	SCIENCE	W	136
BURROW KEVIN	847-784-7707	MUSIC	N	E125
BUTTERLY BRIDGET	847-784-6806	SOCIAL STUDIES	W	300
CADWELL JOHN	847-784-6500	ENGLISH	W	332
CALHOUN MELANIE	847-784-6383	NEW TRIER EXTENSION	N	F141
CAMP DANE	847-784-6596	MATHEMATICS	W	277
CAMPBELL SCOTT	847-784-6504	ENGLISH	W	332
CARDOSA LETICIA		SPECIAL EDUCATION	W	134
CARLSON PAT	847-784-6747	SCIENCE	W	171
CARMICHAEL MIRAH	847-784-2208	ASST SUPERINTENDENT CURRICULUM	C	207
CARNEY PAIGE	847-784-6811	SPECIAL EDUCATION	W	101, 266
CASCARANO DONNA	847-784-2662	BUSINESS SERVICES	N	A406
CASEY RANDY	847-784-6704	MUSIC	W	M288
CAULEY CHRIS	847-784-7675	SPECIAL EDUCATION	N	D119
CAUSBY TONI	847-784-2110	HEALTH SERVICES	W	29
CEPHUS SHERITA	847-784-2277	SOCIAL WORK	W	
CHE JANE	847-784-6831	SPECIAL EDUCATION	W	134
CHIROPOLOS GEORGE	847-784-7751	ATHLETICS/KINETIC WELLNESS	N	F103
CHRISTENSEN MICHAEL REBECC	847-784-6773	SOCIAL STUDIES	W	300
CHU DAN	847-784-2392	TECHNOLOGY	C	404
CICHOWSKI LOIS	847-784-2108	HEALTH SERVICES	W	29
CLARK ANDREW	847-784-7721	SPEECH & THEATRE	W	A203
CLEMENZ SEAN	847-784-6842	SPECIAL EDUCATION	W	266
CLIFF MICHAEL	847-784-7783	TECHNOLOGY EDUCATION	N	D104
CLINE WILLIAM	847-784-6820	NEW TRIER LEARNING CENTER	N	C321
CLINTON ANDREW	847-784-6530	ENGLISH	W	332
CLOUGH DOREEN	847-784-7514	HEALTH SERVICES	N	D105
CLOUGH MICHAEL	847-784-6721	SCIENCE	W	173
COHEN SUSAN	847-784-6816	SPECIAL EDUCATION	C	123-05
COLEGROVE MARK	847-784-6648	KINETIC WELLNESS	W	G101K
COLLINS PETE	847-784-7736	KINETIC WELLNESS	N	F111D
CONNELLY LINDA	847-784-2242	POST HS COUNSELING	W	201

## 2007-2008 STAFF TELEPHONE DIRECTORY

Last Name	Work Phone	Department	Campus	Room
CONNOR CHRIS	847-784-2292	PARAPROFESSIONAL	W	A201
CONROY JIM	847-784-2237	POST HS COUNSELING	W	201
CONWAY DAVE	847-784-1461	PLANT OPERATIONS	N	A105
CORRUS RICHARD	847-784-2293	PARAPROFESSIONAL	W	A201
COSTABILE TERRI	847-784-2204	DIRECTOR SPECIAL EDUCATION	W	278
COWAN CHRISTINE	847-784-7768	AAC/GAP	N	A405
COX DAVID	847-784-7776	AAC/GAP	N	A405
CREDO ROBERT	847-784-6769	SCIENCE	W	171
CRISTOFANI CATHERINE	847-784-6803	SOCIAL STUDIES	W	300
D'AGOSTINO CATHY	847-784-6507	ENGLISH	W	332
DALY DAN	847-784-6733	SCIENCE	W	171
DANE JASON	847-784-7737	KINETIC WELLNESS	N	F111C
DAUGHERTY BRUCE	847-784-7709	MUSIC	W	M380
DAVIS MARNA	847-784-6849	SPECIAL EDUCATION	W	101
DAVIS-COOPER LORI	847-784-2686	PARAPROFESSIONAL	N	D118
DE MENT JACKIE	847-784-6494	TECHNOLOGY EDUCATION	W	G007C
DEUTSCH LAURA	847-784-6557	KINETIC WELLNESS-DANCE	W	G59
DICLEMENTI DENISE	847-784-7591	MATHEMATICS	N	D311
DOHRER TIM	847-784-2207	RESEARCH & ACADEMIC SERVICES	W	205
DON JESSICA	847-784-2393	TECHNOLOGY	W	267
DONLEY DEB	847-784-2239	POST HS COUNSELING	W	201
DONOVAN SHERI	847-784-6716	SCIENCE	W	136
DRAJPUCH STEVEN	847-784-6798	SOCIAL STUDIES	W	300
DREIS DICK	847-784-7600	MATHEMATICS	N	D311
DREVLIN PETE	847-784-6572	KINETIC WELLNESS	W	G102B
DREXLER PAM	847-784-6659	MODERN & CLASSICAL LANGUAGES	W	232
DROZDOFF NIC	847-784-6722	SCIENCE	W	171
DUBLIN LISA	847-784-6354	NEW TRIER LEARNING CENTER	N	C321
DUDLEY MATT	847-784-6886	SPEECH & THEATRE	C	A203/
DUELL IAN	847-784-6792	SOCIAL STUDIES	W	300
DUNBAR FLOSSIE	847-784-2686	PARAPROFESSIONAL	N	D118
DURKIN SCOTT	847-784-6818	SPECIAL EDUCATION	W	101
DZIACKO AGNIESZKA		SPECIAL EDUCATION	W	134
EARNEST DAVE	847-784-7743	KINETIC WELLNESS	N	F111C
EASTON PAUL	847-784-6524	ENGLISH	W	330
EBY BROOKE	847-784-6683	MODERN & CLASSICAL LANGUAGES	W	232
EDISON BILL	847-784-6853	SPECIAL EDUCATION	W	101
EGAN NEVA	847-784-7510	SOCIAL WORK	N	A215
ELIACIN JUDE	847-784-7508	SOCIAL WORK	N	A212
ENGLISH DIANE	847-784-2253	SOCIAL WORK	W	225
ERENO LINA	847-784-2367	TECHNOLOGY	W	224
ESKANDARY SHAYDA	847-784-6719	SCIENCE	W	173
ESTBERG ALF	847-784-7601	MATHEMATICS	N	D311
ESTBERG TIM	847-784-7705	MUSIC	C	E125
EVANICH ATSUKO	847-784-7624	MODERN & CLASSICAL LANGUAGES	N	D226
FAIRBAIRN CRAIG	847-784-6486	DRIVER EDUCATION	W	G007
FASSNACHT ERIK		SPECIAL EDUCATION	W	101
FELDBUSCH TIM	847-784-2075	PLANT OPERATIONS	W	125
FERGUSON BARBARA	847-784-2210	HUMAN RESOURCES	W	213
FERGUSON DAVID	847-784-6881	SPEECH & THEATRE	W	A203
FERRARO KATE	847-784-6731	SCIENCE	W	173
FICKETT DAVID	847-784-6620	MATHEMATICS	W	277
FIGURELLI CAROL	847-784-2245	HUMAN RESOURCES	W	213

## 2007-2008 STAFF TELEPHONE DIRECTORY

Last Name	Work Phone	Department	Campus	Room
FINCK CHUCK	847-784-6490	TECHNOLOGY EDUCATION	W	T203
FINLEY DONALD	847-784-2291	PARAPROFESSIONAL	W	A201
FINLEY TAISHA	847-784-7756	ATHLETCS/KINETIC WELLNESS	N	F128
FISCHER KRISTINE	847-784-6475	BUSINESS EDUCATION	W	428A
FLANAGAN TOM	847-784-7641	SCIENCE	N	D311
FLANIGAN KATHLEEN	847-784-6723	SCIENCE	W	136
FONTANETTA AUGIE	847-784-7735	KINETIC WELLNESS	N	F111B
FORBES GARRETT	847-784-6745	SCIENCE	W	171
FORREST ROB	847-784-6780	SOCIAL STUDIES	W	300
FOSTER CYNTHIA	847-784-2686	PARAPROFESSIONAL	N	D118
FOSTER JIM	847-784-2380	TECHNOLOGY	W	377N
FOWLER SHELLY	847-784-6351	NEW TRIER LEARNING CENTER	N	C321
FRICKE SCOTT	847-784-6560	KINETIC WELLNESS	W	G102D
FROEHLICH MICHELE	847-784-6545	ENGLISH	C	C211, 324
FULLENKAMP MARISSA	847-784-7631	SCIENCE	N	D311
FUNK MARTIN	847-784-6597	MATHEMATICS	W	277
FUNKE MOIRA	847-784-2329	TECHNOLOGY	W	121A
FURMAN CLAUDIA	847-784-6546	ENGLISH	N	324
GADLIN REBEKAH	847-784-6610	MATHEMATICS	W	277
GAETH STEVE	847-784-7690	ART	N	D202A, 10
GAGLIANO STEPHEN	847-784-2249	SOCIAL WORK	W	225
GALANOPOULOS PAT	847-784-2262	ASST PRINCIPAL ADMINISTRATION	W	209
GALLINGER JEAN	847-784-2327	MULTICULTURAL	W	274
GAMAUF STEPHANIE	847-784-6670	MODERN & CLASSICAL LANGUAGES	W	232
GAMRATH GAIL	847-784-2230	ADVISERS	W	200
GAMRATH LEIF	847-784-6561	KINETIC WELLNESS	W	G102B
GANS GERRY	847-784-7766	LIBRARY	N	A301
GARTON MEGAN	847-784-6513	ENGLISH	W	332
GEARY AILEEN	847-784-7554	SOCIAL STUDIES	C	C213, 300
GEORGES ROBERT	847-784-6358	NEW TRIER LEARNING CENTER	N	C322
GERBER STEPHEN		SPECIAL EDUCATION	W	101
GERHARDT CAROLYN	847-784-6784	SOCIAL STUDIES	W	300
GILCHRIST JOHN A	847-784-6570	KINETIC WELLNESS	W	G102G
GILLIE PAT	847-784-2326	ENGLISH	W	274
GINZBURG FRIEDA	847-784-2209	HUMAN RESOURCES	W	213
GNANT JACQUELINE	847-784-6748	SCIENCE	W	173
GOERS DON	847-784-3408	ASSOC SUPERINTENDENT	N	A202
GOLANTY JAYE	847-784-6380	NEW TRIER EXTENSION	N	F141
GOLD-KESSLER ROBYN	847-784-7526	SOCIAL WORK	N	D114
GOLEBIEWSKI TOM	847-784-2255	SOCIAL WORK	W	225
GOMBERG A J	847-784-2254	SOCIAL WORK	W	1C-02
GOMPERS SARAH	847-784-6543	ENGLISH	W	330
GONZALES MELISSA	847-784-6838	SPECIAL EDUCATION	W	101
GONZALEZ DAVID	847-784-2293	PARAPROFESSIONAL	N	D118
GOODMAN KATE	847-784-6564	KINETIC WELLNESS	C	G101J, F107
GOODSPEED DAVID	847-784-6724	SCIENCE	W	136
GORAL BRAD	847-784-6725	SCIENCE	W	171
GORDON JUDY	847-784-7611	MODERN & CLASSICAL LANGUAGES	N	D202
GOULD DORIS	847-784-2692	TECHNOLOGY	N	A412
GOVEIA JUYY	847-784-2339	LIBRARY	W	320
GRADY MARY	847-784-6565	KINETIC WELLNESS	W	G101H
GRADY MICHAEL	847-784-6853	SPECIAL EDUCATION	W	101

## 2007-2008 STAFF TELEPHONE DIRECTORY

Last Name	Work Phone	Department	Campus	Room
GRAUER MARY	847-784-2681	SPEECH & THEATRE	W	219
GREAUX FRANCK	847-784-6656	MODERN & CLASSICAL LANGUAGES	W	232
GREENE ANNMARIE	847-784-6835	SPECIAL EDUCATION	W	101
GRESSEL JUDY	847-784-2309	LIBRARY	W	320
GRIDLEY JOHN	847-784-6726	SCIENCE	W	136
GRIFFIS KATHY	847-784-6849	SPECIAL EDUCATION	W	101
GROOMS DALE	847-784-2299	ATHLETICS	W	G002
GROSS DAN	847-784-7518	SPECIAL EDUCATION	N	C102
GRUENEBERG LYNN	847-784-2353	TECHNOLOGY	W	267
GUYSER KRISTEN	847-784-6727	SCIENCE	W	171
HAAK SUE ELLEN	847-784-7738	KINETIC WELLNESS	N	F111D
HAFRON KIM	847-784-6652	MODERN & CLASSICAL LANGUAGES	C	D226, 232
HALL KERRY	847-784-7572	SOCIAL STUDIES	N	C213
HAMMER ALISSA	847-784-7594	MATHEMATICS	N	D311
HANSON LARISSA	847-784-7603	MATHEMATICS	N	D311
HAPP JERRY	847-784-2290	PARAPROFESSIONAL	W	A205
HARDING LINDA	847-784-6651	MODERN & CLASSICAL LANGUAGES	W	232
HARPER GREG	847-784-6355	NEW TRIER LEARNING CENTER	N	C305
HARPER TONY	847-784-6729	SCIENCE	W	136
HARRIS GREG	847-784-6516	ENGLISH	W	205A
HARRIS SUSE	847-784-6544	ENGLISH	W	324
HARRIS ZENOBIA		SPECIAL EDUCATION	W	134
HARRISON LUCY	847-784-2216	ASST PRINCIPAL STUDENT SERVICE	W	202
HART AIMEE	847-784-6640	MATHEMATICS	W	277
HASKELL AMY	847-784-7560	ENGLISH	N	C211
HAUEISEN HEIDI	847-784-6487	DRIVER EDUCATION	W	G007D
HAYES TIM	847-784-7503	ASST PRINCIPAL ADMINISTRATION	N	A2047
HAYNOR JOHN	847-784-7769	LIBRARY	N	A301
HEIDKAMP AILEEN	847-784-6521	ENGLISH	W	332
HEILMAN CHRISTINA	847-784-6849	SPECIAL EDUCATION	W	101
HELD ADAM	874-784-6728	SCIENCE	W	171
HENDERSON MARY	847-784-6618	MATHEMATICS	W	277
HENDREN KIP	847-784-6767	SCIENCE	W	171
HERMANN JAYLYN	847-784-6625	MATHEMATICS	W	277
HESS RACHEL	847-784-6512	ENGLISH	W	330
HEUBLEIN KATHY	847-784-7551	ENGLISH	N	C211-213
HILL JENNIFER	847-784-6666	MODERN & CLASSICAL LANGUAGES	W	232
HILL MIKE	847-784-2386	TECHNOLOGY	W	426
HINES MARK	847-784-6633	MODERN & CLASSICAL LANGUAGES	C	232, D226
HINKEL CHRISTINE	847-784-6505	ENGLISH	W	330
HINKEL PAT	847-784-6461	ART	W	460
HJELMGREN DAVID	847-784-6794	SOCIAL STUDIES	W	300
HOLDERREAD SUSAN	847-784-6781	SOCIAL STUDIES	W	300
HOLLAND KHRYSS	847-784-2263	FOLLETT BOOKSTORE	W	T192
HOLM STEVE	847-784-2077	PLANT OPERATIONS	W	
HOLMES ROBERT	847-784-6577	KINETIC WELLNESS	W	G102A
HOLT JOHNSE	847-784-6578	KINETIC WELLNESS-DANCE	W	G59
HORNE ANDY	847-784-6629	KINETIC WELLNESS	C	G101J, F107
HORNE MATT	847-784-1460	PLANT OPERATIONS	N	A105
HORVATH EMILY	847-784-2323	SOCIAL WORK	W	368
HORWITZ ADENA	847-784-7553	ENGLISH	N	C211

## 2007-2008 STAFF TELEPHONE DIRECTORY

Last Name	Work Phone	Department	Campus	Room
HOWARD MARK	847-784-7742	KINETIC WELLNESS	C	F111C, G101N
HSIEH EVAN	847-784-7595	MATHEMATICS	N	D311
HUMPHREY STERLING	847-784-6849	SPECIAL EDUCATION	W	107
HUNTINGTON LINDA	847-784-6478	FAMILY & CONSUMER SCIENCES	W	464
HUTTEN JIM	847-784-6749	SCIENCE	W	130-A
IRONSTRACK TAMISE	847-784-7614	MODERN & CLASSICAL LANGUAGES	N	D226
JABON THERESE	847-784-7798	TECHNOLOGY	N	D206
JACKIM LINDA	847-784-2271	ASST SUPERINTENDENT CURRICULUM	W	206
JACKSON JENNIFER	847-784-7691	ART	C	010A
JACKSON LESLIE	847-784-6771	SOCIAL STUDIES	W	300
JACKSON SHAWN	847-784-7571	SOCIAL STUDIES	N	C213
JAMES RENEE	847-784-7770	AAC/GAP	N	A405
JAMES-NOONAN ANNE	847-784-6693	SPEECH & THEATRE	C	M281
JASKOWIAK CINDY	847-784-2270	ASST SUPERINTENDENT CURRICULUM	W	206
JEFFREY SHIRLEY	847-784-2269	ASST PRINCIPAL ADMINISTRATION	W	215
JENKINS BONNIE	847-784-7658	SPECIAL EDUCATION	N	D123
JERUTIS SARAH	847-784-6779	SOCIAL STUDIES	W	300
JOHNSON BRUCE	847-784-6509	ENGLISH	W	332
JOHNSON CHRIS	847-784-2360	TECHNOLOGY	W	276
JOHNSON DEBBIE	847-784-6770	SOCIAL STUDIES	W	300
JOHNSON GRETCHEN	847-784-3406	BUSINESS SERVICES	N	A202
JOHNSON RENEE	847-784-2293	PARAPROFESSIONAL	W	A201
JONES MITCH	847-784-6782	SOCIAL STUDIES	W	300
JOSEPH JOYCE	847-784-7773	ENGLISH	N	A403
JOYCE BARBARA	847-784-6541	ENGLISH	W	330
JUEDES ANDREW	847-784-7659	SPECIAL EDUCATION	N	D123
KACHEL LILIANE	847-784-6382	NEW TRIER EXTENSION	N	F141
KAHLER COLLEEN	847-784-2111	HEALTH SERVICES	W	29
KAJFEZ TIM	847-784-6783	SOCIAL STUDIES	W	300
KALNES KATE	847-784-6562	KINETIC WELLNESS	W	G102B
KAMEN REBECCA	847-784-6657	MODERN & CLASSICAL LANGUAGES	W	232
KANKE MIKE	847-784-7744	KINETIC WELLNESS	N	F111D
KANSLER KEVIN	847-784-7778	BUSINESS EDUCATION	C	428A, A411
KAPLAN ALYCE	847-784-6843	SPECIAL EDUCATION	W	266
KAPUSTIAK KATHERINE	847.720.4522	HUMAN RESOURCES	W	OFF SITE
KARPEL THERESA	847-784-6849	SPECIAL EDUCATION	W	266
KATSINIS NATALIA	847-784-7517	ATHLETICS/KINETIC WELLNESS	N	F111A
KEITH JILL	847-784-7674	SPECIAL EDUCATION	N	D119
KELLY BARBARA	847-784-7521	MUSIC	N	E125
KELLY LOU ANNE	847-784-6108	SUPERINTENDENT	N	A201
KENNEDY KRISTEN	847-784-7781	BUSINESS EDUCATION	C	325
KERMGARD PAUL	847-784-6825	SPECIAL EDUCATION	W	101
KESSEL JULIA	847-784-6658	MODERN & CLASSICAL LANGUAGES	W	232
KIM DON	847-784-6604	MATHEMATICS	W	277
KIM MIN	847-784-7555	ENGLISH	N	C211
KIM PAUL	847-784-6817	SPECIAL EDUCATION	W	101
KIMBALL BRUCE	847-784-7739	KINETIC WELLNESS	C	F111D, G101H
KIND DEB	847-784-6350	NEW TRIER LEARNING CENTER	N	C321
KINNICH ELIZABETH	84-778-6357	SPECIAL EDUCATION	N	C314
KINTOP MICHAEL	847-784-2313	LIBRARY	W	320

## 2007-2008 STAFF TELEPHONE DIRECTORY

Last Name	Work Phone	Department	Campus	Room
KIRKPATRICK JOHN	847-784-6682	MODERN & CLASSICAL LANGUAGES	W	232
KIRSCH HILERRE	847-784-6887	SPEECH & THEATRE	W	M183
KIRSCHBAUM MARYANN	847-784-7676	SPECIAL EDUCATION	N	D123
KLAMM BERTA	847-784-6605	MATHEMATICS	W	277
KLEIMAN JUDY	847-784-6849	SPECIAL EDUCATION	W	101
KLEIN ALEX	847-784-6777	SOCIAL STUDIES	W	300
KLEIN RACHEL	847-784-7565	ENGLISH	N	C211
KLINKNER ANNIE	847-784-6617	MATHEMATICS	W	277
KNIER LINDA	847-784-6661	MODERN & CLASSICAL LANGUAGES	W	232
KOIALOVITCH LISA	847-784-2370	TECHNOLOGY	W	276
KOLASINSKI GRZEGORZ	847-784-2366	TECHNOLOGY	W	222
KOLLAR ELAINE	847-784-6732	SCIENCE	W	136
KOO JAMES	847-784-2676	SOCIAL WORK	N	A402
KORN JEANNE	847-784-7765	LIBRARY	N	A301
KOULENTES COLLEEN	847-784-7681	SPECIAL EDUCATION	N	D119
KOULENTES MATT	847-784-6822	SPECIAL EDUCATION	W	101
KOULENTES TED	847-784-7667	SPECIAL EDUCATION	N	D119
KREBS VIRGINIA	847-784-2663	BUSINESS SERVICES	N	A406
KRITEK KATIE	847-784-7749	KINETIC WELLNESS-DANCE	C	F111D
KROSCHER PAM	847-784-6468	ART	W	12
KUCHARSKI TOM	847-784-6785	SOCIAL STUDIES	W	C213
KURGAN KIMBERLY	847-784-6606	MATHEMATICS	W	277
LADD DAVID	847-784-6696	MUSIC	W	M283
LAFFEY MARTY	847-784-6607	MATHEMATICS	C	D311, 277
LAKOWSKI KATE	847-784-2247	SPECIAL EDUCATION	W	457
LANDES NATE	847-784-6695	MUSIC	W	M288
LANHAM COLE	847-784-6738	SCIENCE	W	171
LAPPAN MARY	847-784-6608	MATHEMATICS	W	277
LAU TOM	847-784-6467	ART	W	010A
LAUDE JULES	847-784-1470	PLANT OPERATIONS	N	
LAUDE ROSENA	847-784-6585	ATHLETICS	W	G104
LAWLER DAN	847-784-6510	ENGLISH	W	332
LAZAR DEBORAH	847-784-7762	LIBRARY	N	A301
LEE AUDRA	847-784-6621	MATHEMATICS	W	277
LEE MARGARET	847-784-6849	SPECIAL EDUCATION	W	001E
LEISSNER MICHAEL	847-784-6647	KINETIC WELLNESS	C	POOL OFFICE
LEONARD BOBBIE	847-784-6619	MATHEMATICS	W	D311, 277
LEONARD KIP	847-784-2293	PARAPROFESSIONAL	W	A201
LEONHARDT JAN	847-784-7632	SCIENCE	N	D311
LEPESKA JONATHAN	847-784-6609	MATHEMATICS	W	277
LEROY ANDY	847-784-6861	BUSINESS SERVICES	W	28
LEROY HOMMEL	847-784-6588	ATHLETICS	W	G005
LEVIN ANDREA	847-784-6787	SOCIAL STUDIES	W	300
LEVIN BOB	847-784-6828	SPECIAL EDUCATION	W	101
LICATA DAN	847-784-6503	ENGLISH	W	332
LISS JESSICA	847-784-6855	SPECIAL EDUCATION	W	107
LISS JOAN	847-784-7513	HEALTH SERVICES	N	D105
LIM JENNIFER	847-784-6518	ENGLISH	W	332
LINKE STEVE	847-784-2074	PLANT OPERATIONS	W	125
LINSENMEIER KATHERINE	847-784-6595	MATHEMATICS	C	277
LITTELL MIRIAM	847-784-2213	ASST PRINCIPAL ADMINISTRATION	W	209
LOBERT LARRY	847-784-2211	HUMAN RESOURCES	W	211

## 2007-2008 STAFF TELEPHONE DIRECTORY

Last Name	Work Phone	Department	Campus	Room
LOFTUS PAT	847-784-6488	DRIVER EDUCATION	W	G007
LOGAN CHARLES	847-784-7552	ENGLISH	N	C211
LOGAN JEANNIE	847-784-6786	SOCIAL STUDIES	W	300
LOMBARDI MOLLY	847-784-6775	SOCIAL STUDIES	W	300
LOPEZ MERCEDES	847-784-6660	MODERN & CLASSICAL LANGUAGES	W	232
LORING BRIAN	847-784-6829	SPECIAL EDUCATION	W	21
LORIS BILL	847-784-6734	SCIENCE	W	171
LOVELL BILL	847-784-2682	PARAPROFESSIONAL	N	D118
LOWERY BRIAN	847-784-6353	NEW TRIER LEARNING CENTER	N	C311
LUCADAMO JOHN	847-784-6526	ENGLISH	W	330
LUCENTE CHRISTOPHER	- -	SPECIAL EDUCATION	W	107
LYNN NINA	847-784-7520	SPEECH & THEATRE	C	E124
MAGEE MAUREEN	847-784-2335	ASST PRINCIPAL ADMINISTRATION	W	209
MAHER KAREN	847-784-2233	POST HS COUNSELING	W	201
MAHER MAUREEN F	847-784-7740	KINETIC WELLNESS	C	F111D, G101N
MALAMUTH JESSICA	847-784-6515	ENGLISH	W	330
MALNATI RICK	847-784-6571	KINETIC WELLNESS	W	G102C
MANZI KERRI	847-784-6737	SCIENCE	W	171
MARICH DYAN	847-784-6602	MATHEMATICS	W	277
MARKHAM JEFF	847-784-6528	ENGLISH	W	332
MAROHN JIM	847-784-2293	PARAPROFESSIONAL	W	A201
MARRIBLE FAYE	847-784-2671	BUSINESS SERVICES	N	A406
MARSH GREG	847-784-2312	LIBRARY	W	320
MARTIN EDMUND	847-784-2686	PARAPROFESSIONAL	N	D118
MARTINEZ YOLANDA	847-784-6830	SPECIAL EDUCATION	W	101-03
MAUER DEB	847-784-7634	SCIENCE	N	D311
MAXMAN TODD	847-784-6788	SOCIAL STUDIES	W	300
MAZUR RACHEL	847-784-6522	ENGLISH	W	332
MCCARTHY KAARIN	847-784-7599	MATHEMATICS	N	D313
MCCARTHY KETA	847-784-2311	LIBRARY	W	320C
MCCARTHY KIRSTIN	847-784-6611	MATHEMATICS	W	277
MCCLINTOCK PATRICIA	847-784-7750	ATHLETICS	N	F102
MCCREA PHIL	847-784-7636	SCIENCE	N	D311
MCDONNELL JENNIFER	847-784-6827	SPECIAL EDUCATION	W	101-06
MCDONOUGH JENNIFER	847-784-6479	FAMILY & CONSUMER SCIENCES	W	442
MCFARLAND GEORGE	847-784-2686	PARAPROFESSIONAL	N	D118
MCLAUGHLIN TERRI	874-784-6863	NSSED	W	134
MCMANUS GARY	847-784-6502	ENGLISH	W	332
MCMICKEN MELISSA	847-784-6532	ENGLISH	W	330
MCNALLY MAIRE	847-784-6634	MODERN & CLASSICAL LANGUAGES	W	232
MELCHOR-GONZALEZ ERNESTO		SPECIAL EDUCATION	W	134
MERCER TOM	847-784-6584	KINETIC WELLNESS	W	G105
MEUCCI MICHELE	847-784-7502	PRINCIPAL	N	A210
MEYER LAUREN	847-784-6730	SCIENCE	W	171
MEYER STEVE	847-784-7775	AAC/GAP	N	A405
MILLER JOHN	847-784-6712	SCIENCE	W	171
MILLER MARY	874-784-6845	NSSED	W	101
MITCHELL JUDY	847-784-2316	LIBRARY	C	320
MITCHELL MARY	847-784-6848	SPECIAL EDUCATION	C	D119
MOLYNEAUX WES	847-784-6736	SCIENCE	W	173
MOLZAHN CHRISTINE	847-784-7644	SCIENCE	N	D311
MORETTA STEPHANIE	847-784-6680	MODERN & CLASSICAL LANGUAGES	W	232

## 2007-2008 STAFF TELEPHONE DIRECTORY

Last Name	Work Phone	Department	Campus	Room
MORRIS ANNE	847-784-6603	MODERN & CLASSICAL LANGUAGES	C	332
MORRIS JACKIE	847-784-6823	SPECIAL EDUCATION	W	001B
MORRIS LYNN	847-784-2108	HEALTH SERVICES	W	29
MORTIER DAN	847-784-2220	ADVISERS	W	200
MORTIER JOE	847-784-6511	ENGLISH	W	330
MORTON KATERI	847-784-2251	SOCIAL WORK	W	225
MROZIK REIKO	847-784-7793	TECHNOLOGY	N	C331
MUIR CAROLYN	847-784-7574	SOCIAL STUDIES	N	C213
MULLER KATHY	847-784-6585	KINETIC WELLNESS	W	G104
MUNDER BARBARA	847-784-6849	SPECIAL EDUCATION	W	103
MUNLEY ANNE	847-784-6849	MULTICULTURAL	W	379
MUNLEY GERRY	847-784-6710	SCIENCE	W	173A
MURPHY STEPHEN	847-784-6460	ART	W	460
MYERS TIFFANY	847-784-7509	SOCIAL WORK	N	A213
NAKAYAMA KIMIKO	847-784-6671	MODERN & CLASSICAL LANGUAGES	W	232
NALEPKA EDILIA	847-784-6672	MODERN & CLASSICAL LANGUAGES	W	232
NAPOLEON MIKE	847-784-6573	KINETIC WELLNESS	W	G102C
NASET LAUREN	847-784-2351	SOCIAL WORK	W	358
NASH EILEEN	847-784-2246	ADVISERS	W	200
NEIWEEM JOHN	847-784-2071	PLANT OPERATIONS	W	125
NEPTUN BRITTANY	847-784-7637	SCIENCE	N	D311
NEUMAYER DEBBIE	847-784-7661	SPECIAL EDUCATION	N	D119
NGUYEN HANG	847-784-6808	SOCIAL STUDIES	W	300
NGUYEN LINHHAI	847-784-7665	SPECIAL EDUCATION	N	C321
NICKELS MARY ELLEN	847-784-2212	ASST PRINCIPAL ADMINISTRATION	W	209
NICOLANDIS CALLIOPE	847-784-6615	MATHEMATICS	W	277
NIEMIRA AMY	847-784-2258	RESEARCH & ACADEMIC SERVICES	W	221
NISBET KATHRYN	847-784-6833	SPECIAL EDUCATION	W	101
NOVAK JENNIFER	847-784-6778	SOCIAL STUDIES	W	300
NOVAK JULIE	847-784-7562	SOCIAL STUDIES	N	C213
NYKAZA STEPHANIE	847-784-6575	KINETIC WELLNESS	W	G102B
OBEREMBT RANDY	847-784-2226	ATHLETICS	W	214
O'CONNELL BRIAN	847-784-2218	POLICE LIAISON	W	202C
O'CONNOR JOHN	847-784-6538	ENGLISH	W	332
O'CONNOR MICHAEL	847-784-2296	POST HS COUNSELING	W	201
ODDO LINDA	847-784-6885	SPEECH & THEATRE	W	219
O'DONOVAN MICHAEL	847-784-6548	BUSINESS EDUCATION	W	325
OETTER CHRIS	847-784-6533	ENGLISH	W	332
OFCKY DEB	847-784-2227	KINETIC WELLNESS	W	214
OGRODNIK KYLE	847-784-6593	MATHEMATICS	W	277
O'HARE MIKE	847-784-7772	AAC/GAP	N	A405
O'MALLEY ANNE	847-784-7760	LIBRARY	N	A301
ONO PEGGY	847-784-2228	ADVISERS	W	203
ONSTOTT MARK	847-874-6576	KINETIC WELLNESS	W	POOL OFFICE
O'REILLY KAT	847-784-6496	ART	W	T295
ORLANDO ANGELA	847-784-7511	SOCIAL WORK	N	D114
OSTROWSKI ALEXANDRIA	847-784-7657	SPECIAL EDUCATION	N	D123
OTTAVIANO DAN	847-784-6468	ART	W	12
OTTAVIANO MATT	847-784-2215	ASST PRINCIPAL ADMINISTRATION	W	212
OTTOLINI MOLLY	847-784-2240	POST HS COUNSELING	W	201
OWENS JOHNYELL	847-784-2291	PARAPROFESSIONAL	W	A201
PARIZEK JULIE	847-784-7598	MATHEMATICS	N	D311

## 2007-2008 STAFF TELEPHONE DIRECTORY

Last Name	Work Phone	Department	Campus	Room
PARKS WENDY	847-784-2281	STUDENT ACTIVITIES	W	19
PASQUESI BOB	847-784-7638	SCIENCE	N	D311
PATCHELL MARY	847-784-2667	COMMUNICATIONS	N	A401
PAUNAN SUSIE	847-784-6832	SPECIAL EDUCATION	W	1C-02
PAYNE IDA	847-784-6636	STUDENT ACTIVITIES	W	19
PEARSON CHRIS	847-784-6839	ASST PRINCIPAL STUDENT SERVICE	W	202B
PEDERSEN KAREN	847-784-2214	ASST PRINCIPAL ADMINISTRATION	W	212
PENROD RICK	847-784-6889	SPEECH & THEATRE	W	A203
PETERS CHRISTINE	847-784-7669	SPECIAL EDUCATION	N	D119
PETMEZAS ATHENA	847-784-6474	BUSINESS EDUCATION	W	428A
PHILLIPS TERRY	847-784-7597	MATHEMATICS	N	D311
PILAT KATHY	847-784-6471	ART	W	12
PINKOWSKI KATHY	847-784-2674	BUSINESS SERVICES	N	A406
PINOS DEAN	847-784-7563	SOCIAL STUDIES	W	C213
PLANK ELIZABETH	847-784-6791	SOCIAL STUDIES	W	300
PLATT MARION	847-784-6854	SPECIAL EDUCATION	W	101
PLAZA PETER	847-784-2375	TECHNOLOGY	W	377S
PLOTNIK MARI	847-784-2202	PRINCIPAL	W	208
POPPENGA DAWN	847-784-6477	BUSINESS EDUCATION	C	428A
POTHAST KAY	847-784-6566	KINETIC WELLNESS	W	G101K
PREUSSER DORIS	847-784-6632	STUDENT ACTIVITIES	W	19
PRICE BOBBIE	847-784-7610	MODERN & CLASSICAL LANGUAGES	N	D226
PRITCHARD JACQUIE	847-784-2363	TECHNOLOGY	W	121A
PRYOR BERTHA	847-784-2687	PARAPROFESSIONAL	N	D118
QURESHI KIRAN	847-784-6508	ENGLISH	W	330
RABIN KATHERINE	847-784-2282	STUDENT ACTIVITIES	W	019
RANDALL TONYA	847-784-6662	MODERN & CLASSICAL LANGUAGES	W	232
RANDALL TRISHA	847-784-6834	SPECIAL EDUCATION	W	101
RANSOM SHEILA	847-784-2256	PSYCHOLOGIST	W	223
RECHLICZ TABITHA	847-784-7670	SPECIAL EDUCATION	N	D119
RECTOR DAN	847-784-2294	PARAPROFESSIONAL	W	A201
REHANA RON	847-784-2378	TECHNOLOGY	W	327
REINSTEIN DAVID	847-784-6616	MATHEMATICS	W	277
REPP ELENA	847-784-6549	MULTICULTURAL	W	379
RESCORL RACHEL	847-784-7683	SPECIAL EDUCATION	N	D123C
RHEE DAVID	847-784-6520	ENGLISH	W	332
RILEY SHAWN	847-784-6489	DRIVER EDUCATION	W	G007D, G102D
RIOS CHRISTOPHER	847-784-2334	TECHNOLOGY	W	121A
RO KATHY	847-784-2248	SOCIAL WORK	W	225
ROBERTS LUKE		SPECIAL EDUCATION	W	D107
ROBERTSON JAN	847-784-2301	LIBRARY	W	320
ROBINSON JASON	847-784-6849	SPECIAL EDUCATION	W	266
ROBINSON TOMMIE	847-784-2687	PARAPROFESSIONAL	N	D118
ROGAN DAN	847-784-2235	POST HS COUNSELING	W	201
ROLDAN NEDITH	847-784-6476	BUSINESS EDUCATION	W	428A
ROSENBARGER LAURA	847-784-6793	SOCIAL STUDIES	W	300
ROSENBERG JAY	847-784-6535	ENGLISH	W	332
ROSENBLOOM DORI	847-784-7618	MODERN & CLASSICAL LANGUAGES	N	D226
ROSHEGER PETER	847-784-6699	MUSIC	C	M382
ROSSMANN DANIELA	847-784-6665	MODERN & CLASSICAL LANGUAGES	W	232
ROUSH MICHELLE	847-784-6563	KINETIC WELLNESS	W	G102A
ROWE ROBERT	847-784-6614	MATHEMATICS	W	277

## 2007-2008 STAFF TELEPHONE DIRECTORY

Last Name	Work Phone	Department	Campus	Room
RUBIN BRETT	847-784-7568	ENGLISH	N	C211
RUBIN CHARLOTTE	847-784-2234	POST HS COUNSELING	W	201
RUBIN JOSH	847-784-6890	SPEECH & THEATRE	C	E221
RUBINO NATALIE	847-784-6849	SPECIAL EDUCATION	W	101
RUIZ ROBERT	847-784-7516	BUSINESS EDUCATION/ATHLETICS	N	F111F
RUTT CHRISTOPHER	847-784-6568	KINETIC WELLNESS-DANCE	W	G59
SAFSTROM ANNIKA	847-784-6601	ATHLETICS	W	G-002
SALERNO FRANK	847-784-6720	SCIENCE	W	171
SALISBURY ANNE	847-784-6664	MODERN & CLASSICAL LANGUAGES	W	232
SALLY PAUL	847-784-7590	MATHEMATICS	N	D311
SANDRAVELIS CHRISI	847-784-7680	SPECIAL EDUCATION	W	
SANTELLI SUE	847-784-2206	ASST SUPERINTENDENT CURRICULUM	W	205
SASZIK ERIK	847-784-7592	MATHEMATICS	N	D311
SAVAGE-WILLIAMS PAT	847-784-7660	SPECIAL EDUCATION	N	D117
SCHEIDT MARK	847-784-6491	TECHNOLOGY EDUCATION	W	T196
SCHEINFIELD RACHEL	847-784-7673	SPECIAL EDUCATION	C	457
SCHMITT KRISTINE	847-784-2113	STUDENT ASSISTANCE PROGRAM	W	29
SCHMUDE MAGGIE	847-784-2306	LIBRARY	W	320
SCHOENWETTER JASON	847-784-6853	SPECIAL EDUCATION	W	101
SCHRENK PETER	847-784-6463	ART	W	T197A
SCHROEDER NANCY	847-784-2225	ATHLETICS	W	214
SCHUBERT GARY	847-784-7612	MODERN & CLASSICAL LANGUAGES	N	D226
SCHWARK URSULA	847-784-6552	KINETIC WELLNESS	W	G101N
SCHWARTZ MARC	847-784-7534	ASST PRINCIPAL ADMINISTRATION	N	A221
SCHWARTZ SANDY	847-784-6837	SPECIAL EDUCATION	C	101B-01, A405
SCOTT CINDEE	847-784-2231	ADVISERS	W	200
SEGO GREG	847-784-6551	MATHEMATICS	W	277
SEIFERT SONYA	847-784-6667	MODERN & CLASSICAL LANGUAGES	W	232
SELDESS JOSH	847-784-7506	ADVISERS	N	A211
SENIOR TOM	847-784-6739	SCIENCE	W	171
SEVESKA STEPHANIE	847-784-7578	ENGLISH	N	C211
SEWELL NATALIE	847-784-2365	TECHNOLOGY	W	222
SHAH SMITA	847-784-2665	BUSINESS SERVICES	N	A406
SHANNON JANET	847-784-7764	LIBRARY	N	A301
SHAPIRO JANIS	847-784-7533	ASST PRINCIPAL ADMINISTRATION	N	A221
SHAY JONATHAN	847-784-6514	ENGLISH	W	332
SHERIDAN PATRICIA	847-784-6506	ENGLISH	W	330
SHI MEREDITH	847-784-6631	MODERN & CLASSICAL LANGUAGES	C	D226, 232
SHNEIDER SUSAN	847-784-7619	MODERN & CLASSICAL LANGUAGES	N	D226
SHORROCK TOM	847-784-2243	POST HS COUNSELING	W	201
SILVERS NATHAN	847-784-7791	TECHNOLOGY EDUCATION	C	T191
SIMON RON	847-784-6810	SPECIAL EDUCATION	W	101
SLAV MICHELE	847-784-2660	BUSINESS SERVICES	N	A406
SMIT RENEE	847-784-7668	SPECIAL EDUCATION	N	D123
SMITH JULIE	847-784-6869	SPECIAL EDUCATION	W	23
SMITH JULIET	847-784-7671	SPECIAL EDUCATION	N	D123
SMITH KERRY	847-784-7621	MODERN & CLASSICAL LANGUAGES	C	D226, 232
SMITH MARISSA	847-784-7617	MODERN & CLASSICAL LANGUAGES	N	D226, 232
SMITH MARVA	847-784-2294	PARAPROFESSIONAL	W	A201
SMITH NICOLE	847-784-6826	SPECIAL EDUCATION	W	101-13
SMITH TRACY	847-784-6741	SCIENCE	W	136
SOLGER CAROL	847-784-2304	LIBRARY	W	320

## 2007-2008 STAFF TELEPHONE DIRECTORY

Last Name	Work Phone	Department	Campus	Room
SOSA JAMIE	847-784-2072	PLANT OPERATIONS	W	125
SOWA CAROLINE	847-784-7633	SCIENCE	N	D311
SPAGNOLI BOB	847-784-7695	TECHNOLOGY EDUCATION	W	T196
SPARKOWSKI KIM	847-784-6586	HUMAN RESOURCES	W	G204
SPEKTOR BORIS	847-784-2387	TECHNOLOGY	W	422
SPIELMAN JESSICA	847-784-6352	NEW TRIER LEARNING CENTER	N	C313
SPIELMAN MERLE	847-784-2238	POST HS COUNSELING	W	201
SPRINGER DOUG	847-784-6891	SPEECH & THEATRE	C	219
STACEY DEBBIE	847-784-2200	PRINCIPAL	W	208
STARCK-KING LORRI	847-784-6673	MODERN & CLASSICAL LANGUAGES	W	232
STATEN SHERI	847-784-7776	AAC/GAP	N	A405
STAUDER GRETCHEN	847-784-2236	POST HS COUNSELING	W	201
STEFFES AARON	847-784-6472	ART	W	010A
STETSKO MARGARET	847-784-6592	MATHEMATICS	W	277
STEVENS MARGARET	847-784-2259	RESEARCH & ACADEMIC SERVICES	W	221
STILES LAURA	847-784-2361	HUMAN RESOURCES	W	213
STILLER BRANDON	847-784-6714	SCIENCE	W	171
STOEGBAUER LARRY	847-784-6558	KINETIC WELLNESS	W	G101J
STRAUBE LINDA	847-784-2347	LIBRARY	W	320E
STROM BRENT	847-784-7557	ENGLISH	N	C211, 213
STROM PAM	847-784-7761	LIBRARY	N	A301
STRZOK JOHN	847-784-2285	SODEXHO	W	CAFÉ
STUCZYNSKI MATT	847-784-6677	MODERN & CLASSICAL LANGUAGES	W	232
SULLIVAN DAWN	847-784-6480	FAMILY & CONSUMER SCIENCES	C	442
SWAN SANDY	847-784-7772	AAC/GAP	N	A405
SWEENEY TOM	847-784-2687	PARAPROFESSIONAL	N	D118
SZENDERSKI SARAH	847-784-6836	SPECIAL EDUCATION	W	101
TALAMANTES CLAUDIA	847-784-2292	PARAPROFESSIONAL	W	A201
TAMUZIAN DAVID	847-784-6678	MODERN & CLASSICAL LANGUAGES	W	232
TAUBER SUE	847-784-7792	TECHNOLOGY	N	A409
TAYLOR ANN K	847-784-7559	ENGLISH	N	C211
TEBBE TOM	847-784-2232	ADVISERS	W	200
TEMPLE MATT	847-784-6700	MUSIC	C	M381
THEODORE JAN	847-784-6349	NEW TRIER LEARNING CENTER	N	C313
THOMAS MARIE	847-784-6841	SPECIAL EDUCATION	W	101
THORNGREN SUSIE	847-784-2244	POST HS COUNSELING	W	201
TIMKO MARY	847-784-2201	PRINCIPAL	W	208
TISON MARLA	847-784-2261	ASST PRINCIPAL ADMINISTRATION	W	209
TORKELSON KRISTEN	847-784-6598	MATHEMATICS	W	277
TRACY MARLA	847-784-7505	ADVISERS	N	A211
TRAGOS PETER	847-784-6796	SOCIAL STUDIES	W	300
TREPINA CHERYL	847-784-6821	SPECIAL EDUCATION	W	001D
TRICOLI JENNIFER	847-784-7741	KINETIC WELLNESS	N	F111C
TROVATO CARLO	847-784-6542	ENGLISH	W	330
TUFT SHARON	847-784-2294	PARAPROFESSIONAL	W	A201
TWADELL ANNE	847-784-6844	SPECIAL EDUCATION	W	101
URKOVICH KATHERINE	847-784-2219	ASST PRINCIPAL STUDENT SERVICE	W	202
VALADEZ MICHAEL	847-784-2377	TECHNOLOGY	W	222
VALERIO STEPHANIE	847-784-6715	SCIENCE	W	171
VAN MERSBERGEN BRIAN	847-784-6569	KINETIC WELLNESS	W	G101J
VARGAS COLBY	847-784-6797	SOCIAL STUDIES	W	300
VAUGHAN SUSAN	847-784-6697	MUSIC	W	M288
VAVRINCIK MARTIN		SPECIAL EDUCATION	W	134

## 2007-2008 STAFF TELEPHONE DIRECTORY

Last Name	Work Phone	Department	Campus	Room
VIKTORA STEVE	847-784-6590	MATHEMATICS	W	277
VILLALUZ ANGEL	847-784-7786	TECHNOLOGY	W	222
VIRKUS ANDRES	847-784-6523	ENGLISH	W	332
VOGLTANZ ADAM	847-784-7677	SPECIAL EDUCATION	N	D123
WAECHTLER PAUL	847-784-6740	SCIENCE	W	136, 121A
WAGNER RORY	847-784-6744	SCIENCE	W	004A
WALAS BONNIE	847-784-6853	SPECIAL EDUCATION	W	266
WARD ROBYN	847-784-7635	SCIENCE	N	D311
WARING SHARON	847-784-7640	SCIENCE	N	D311
WARRICK JIM	847-784-6701	MUSIC	C	M384
WASKIN ROSS	847-784-6359	NEW TRIER LEARNING CENTER	N	C313
WEDLOW SHERRIA	847-784-2687	PARAPROFESSIONAL	N	D118
WEILER KURT	847-784-6539	ENGLISH	W	332
WEINER SHARON	847-784-2231	ADVISERS	W	203
WEISS JUDY	847-784-7626	MODERN & CLASSICAL LANGUAGES	N	D226
ROHWER PATTI	847-784-6698	MUSIC	C	M288
WENING GRETCHEN	847-784-6599	MATHEMATICS	W	277
WEXLER JENNIFER	847-784-6624	MATHEMATICS	C	D311, 277
WHITE MARILYN	847-784-7623	MODERN & CLASSICAL LANGUAGES	N	D226
WHITEBLOOM MYLES	847-784-7602	MATHEMATICS	N	D311
WIDEMAN JOAN	847-784-3409	ASSOC SUPERINTENDENT	N	A202
WILLER LORI	847-784-6684	MODERN & CLASSICAL LANGUAGES	W	232
WILLIAMS SCOTT	847-784-2229	ADVISERS	W	203
WILLIAMSON BRENT	847-784-6768	SCIENCE	W	136
WILSON JEAN	847-784-2109	HEALTH SERVICES	W	29
WININSKY JOHANNAH	847-784-6553	KINETIC WELLNESS-DANCE	W	G59
WISCHWEH GRETCHEN	847-784-6743	SCIENCE	W	171
WISNER DAVID	847-784-6622	MATHEMATICS	W	277
WITT TERRY	847-784-6849	SPECIAL EDUCATION	W	101
WITWER MARTHA	847-784-2336	SOCIAL WORK	W	368
WIVIOTT SCOTT	847-784-2217	ATHLETICS	W	214
WOJCIK DIANE	847-784-6851	SPECIAL EDUCATION	W	21
WOLK LORETTA	847-784-2300	LIBRARY	W	320
WOOD JOSH	847-784-6492	TECHNOLOGY EDUCATION	C	T191
WOODRUFF BRIAN	847-784-7630	SCIENCE	N	D311
WOODS LIZ	847-784-3071	SODEXHO	N	CAFÉ
WRIGHT JAMES	847-784-6807	SOCIAL STUDIES	W	300
WUKAS MARK	847-784-7561	ENGLISH	N	C211
WURTH DON	847-784-7639	SCIENCE	N	D311
WURZBURG PEG	847-784-6711	SCIENCE	W	173
WYCOFF LOIS	847-784-2268	ASST PRINCIPAL ADMINISTRATION	W	271
YANG BEN	847-784-6795	SOCIAL STUDIES	W	300
YARBROUGH SHIRLEY	847-784-2294	PARAPROFESSIONAL	W	A201
YONKE LINDA	847-784-6109	SUPERINTENDENT	N	A201
YOUNG CARA	847-784-2260	SOCIAL WORK	W	268
ZABIHIAN JILLA	847-784-6550	MULTICULTURAL	W	371
ZAJAC MEGAN	847-784-6814	SPECIAL EDUCATION	W	1C-02
ZAMIN RANDY	847-784-6623	MATHEMATICS	W	277
ZEMEL ELLEN	847-784-2250	SOCIAL WORK	W	225
ZIERING STEPHEN	847-784-6849	SPECIAL EDUCATION	W	107
ZILKA ALEX	847-784-7573	SOCIAL STUDIES	N	C213
ZUPERKU LAUREN	847-784-7596	MATHEMATICS	N	D311
ZWIRNER ED	847-784-7550	ENGLISH	N	C211

# Cross Reference

COMMUTERS		
C	ART	JACKSON JENNIFER
C	DIVERSITY/ C & I	CARMICHAEL MIRAH
C	BUSINESS EDUCATION	KANSLER KEVIN
C	BUSINESS EDUCATION	KENNEDY KRISTEN
C	BUSINESS EDUCATION	POPPENGA DAWN
C	ENGLISH	BOND KEVIN
C	ENGLISH	FROELICH MICHELE
C	ENGLISH/MCL	MORRIS ANNE
C	KINETIC WELLNESS	GOODMAN KATE
C	KINETIC WELLNESS	HORNE ANDY
C	KINETIC WELLNESS	HOWARD MARK
C	KINETIC WELLNESS	KIMBALL BRUCE
C	KINETIC WELLNESS	LEISSNER MICHAEL
C	KINETIC WELLNESS	MAHER MAUREEN F
C	KINETIC WELLNESS-DANCE	KRITEK KATIE
C	LIBRARY	MITCHELL JUDY
C	MATHEMATICS	LAFFEY MARTY
C	MATHEMATICS	LINSENMEIER KATHERINE
C	MATHEMATICS	WEXLER JENNIFER
C	MCL	HAFRON KIM
C	MCL	HINES MARK
C	MCL	SHI MEREDITH
C	MCL	SMITH KERRY
C	MUSIC	APETEAN ANCA
C	MUSIC	ESTBERG TIM
C	MUSIC	ROHWER PATTI
C	MUSIC	ROSHEGER PETER
C	MUSIC	TEMPLE MATT
C	MUSIC	WARRICK JIM
C	PRACTICAL ARTS	SILVERS NATHAN
C	PRACTICAL ARTS	SULLIVAN DAWN
C	PRACTICAL ARTS	WOOD JOSH
C	SOCIAL STUDIES	GEARY AILEEN
C	SPECIAL EDUCATION	BOLING KAYE
C	SPECIAL EDUCATION	COHEN SUSAN
C	SPECIAL EDUCATION	MITCHELL MARY
C	SPECIAL EDUCATION	SCHEINFELD RACHEL
C	SPECIAL EDUCATION	SCHWARTZ SANDY
C	SPEECH & THEATRE	DUDLEY MATT
C	SPEECH & THEATRE	JAMES-NOONAN ANNE
C	SPEECH & THEATRE	LYNN NINA
C	SPEECH & THEATRE	RUBIN JOSH
C	SPEECH & THEATRE	SPRINGER DOUG
C	TECHNOLOGY	CHU DAN

NORTHFIELD CAMPUS		
N	AAC/GAP	COWAN CHRISTINE
N	AAC/GAP	COX DAVID
N	AAC/GAP	JAMES RENEE
N	AAC/GAP	MEYER STEVE
N	AAC/GAP	O'HARE MIKE
N	AAC/GAP	STATEN SHERI
N	AAC/GAP	SWAN SANDY
N	ACTIVITIES/ATHLETICS/ KINETIC WELLNESS	KATSINIS NATALIA
N	ADMINISTRATIVE SERVICES	ABRAMS DOLORES
N	ADMINISTRATIVE SERVICES	SCHWARTZ MARC
N	ADMINISTRATIVE SERVICES	SHAPIRO JANIS
N	ADVISERS	SELDESS JOSH
N	ADVISERS	TRACY MARLA
N	ART	GAETH STEVE
N	ART/MCL/PRACTICAL ARTS	GORDON JUDY
N	ASSISTANT PRINCIPAL	HAYES TIM
N	ASSOC SUPERINTENDENT	GOERS DON
N	ASSOC SUPT OFFICE	WIDEMAN JOAN
N	ATHLETCS/KINETIC WELLNESS	FINLEY TAISHA
N	ATHLETICS	MCCLINTOCK PATRICIA
N	ATHLETICS/ KINETIC WELLNESS	CHIROPOLOS GEORGE
N	BUSINESS EDUCATION/ATHLETICS	RUIZ ROBERT
N	BUSINESS SERVICES	BLAIR YVONNE
N	BUSINESS SERVICES	BLODGETT ELIZABETH
N	BUSINESS SERVICES	CASCARANO DONNA
N	BUSINESS SERVICES	JOHNSON GRETCHEN
N	BUSINESS SERVICES	KREBS VIRGINIA
N	BUSINESS SERVICES	MARRIBLE FAYE
N	BUSINESS SERVICES	PINKOWSKI KATHY
N	BUSINESS SERVICES	SHAH SMITA
N	BUSINESS SERVICES	SLAV MICHELE
N	COMMUNICATIONS	BLAIR LAURA
N	COMMUNICATIONS	PATCHELL MARY
N	EDUCATIONAL FOUNDATION	BREEN MARIANNE
N	ENGLISH	BERLIANT ERIC
N	ENGLISH	FURMAN CLAUDIA
N	ENGLISH	HASKELL AMY
N	ENGLISH	HORWITZ ADENA
N	ENGLISH	JOSEPH JOYCE
N	ENGLISH	KIM MIN
N	ENGLISH	KLEIN RACHEL
N	ENGLISH	LOGAN CHARLES
N	ENGLISH	RUBIN BRETT

N	ENGLISH	SEVESKA STEPHANIE
N	ENGLISH	STROM BRENT
N	ENGLISH	TAYLOR ANN K
N	ENGLISH	WUKAS MARK
N	ENGLISH	ZWIRNER ED
N	ENGLISH/SOCIAL STUDIES	HEUBLEIN KATHY
N	HEALTH SERVICES	CLOUGH DOREEN
N	HEALTH SERVICES	LIESS JOAN
N	HEALTH SERVICES/ SPECIAL EDUCATION	NEUMAYER DEBBIE
N	KINETIC WELLNESS	COLLINS PETE
N	KINETIC WELLNESS	DANE JASON
N	KINETIC WELLNESS	EARNEST DAVE
N	KINETIC WELLNESS	FONTANETTA AUGIE
N	KINETIC WELLNESS	HAAK SUE ELLEN
N	KINETIC WELLNESS	KANKE MIKE
N	KINETIC WELLNESS	TRICOLI JENNIFER
N	LIBRARY	BRUNO LAURA
N	LIBRARY	GANS GERRY
N	LIBRARY	HAYNOR JOHN
N	LIBRARY	KORN JEANNE
N	LIBRARY	LAZAR DEBORAH
N	LIBRARY	O'MALLEY ANNE
N	LIBRARY	SHANNON JANET
N	LIBRARY	STROM PAM
N	MATHEMATICS	DREIS DICK
N	MATHEMATICS	ESTBERG ALF
N	MATHEMATICS	HAMMER ALISSA
N	MATHEMATICS	HANSON LARISSA
N	MATHEMATICS	HSIEH EVAN
N	MATHEMATICS	MCCARTHY KAARIN
N	MATHEMATICS	PARIZEK JULIE
N	MATHEMATICS	PHILLIPS TERRY
N	MATHEMATICS	SALLY PAUL
N	MATHEMATICS	SASZIK ERIK
N	MATHEMATICS	WHITEBLOOM MYLES
N	MATHEMATICS	ZUPERKU LAUREN
N	MATHEMATICS/SCIENCE	DICLEMENTI DENISE
N	MCL	EVANICH ATSUKO
N	MCL	IRONSTRACK TAMISE
N	MCL	PRICE BOBBIE
N	MCL	ROSENBLOOM DORI
N	MCL	SCHUBERT GARY
N	MCL	SHNEIDER SUSAN
N	MCL	SMITH MARISSA
N	MCL	WEISS JUDY
N	MCL	WHITE MARILYN
N	MUSIC	BURROW KEVIN

N	MUSIC/PERFORMING ARTS/ SPEECH & THEATRE	KELLY BARBARA
N	NEW TRIER EXTENSION	CALHOUN MELANIE
N	NEW TRIER EXTENSION	GOLANTY JAYE
N	NEW TRIER EXTENSION	KACHEL LILIANE
N	NTLC	CLINE WILLIAM
N	NTLC	DUBLIN LISA
N	NTLC	FOWLER SHELLY
N	NTLC	GEORGES ROBERT
N	NTLC	HARPER GREG
N	NTLC	KIND DEB
N	NTLC	LOWERY BRIAN
N	NTLC	SPIELMAN JESSICA
N	NTLC	THEODORE JAN
N	NTLC	WASKIN ROSS
N	PLANT OPERATIONS	BLAIR DAFTAN
N	PLANT OPERATIONS	CONWAY DAVE
N	PLANT OPERATIONS	HORNE MATT
N	PLANT OPERATIONS	LAUDE JULES
N	POLICE LIAISON	BELL CHRIS
N	PRACTICAL ARTS	BOUMSTEIN JASON B
N	PRACTICAL ARTS	CLIFF MICHAEL
N	PRINCIPAL	BORJA JAN
N	PRINCIPAL'S OFFICE	MEUCCI MICHELE
N	SCIENCE	BREINER KELLY
N	SCIENCE	FLANAGAN TOM
N	SCIENCE	FULLENKAMP MARISSA
N	SCIENCE	LEONHARDT JAN
N	SCIENCE	MAUER DEB
N	SCIENCE	MCCREA PHIL
N	SCIENCE	MOLZAHN CHRISTINE
N	SCIENCE	NEPTUN BRITTANY
N	SCIENCE	PASQUESI BOB
N	SCIENCE	SOWA CAROLINE
N	SCIENCE	WARD ROBYN
N	SCIENCE	WARING SHARON
N	SCIENCE	WOODRUFF BRIAN
N	SCIENCE	WURTH DON
N	SECURITY	ANDERSON REGINA
N	SECURITY	BONHOMME MAURICE
N	SECURITY	DAVIS-COOPER LORI
N	SECURITY	DUNBAR FLOSSIE
N	SECURITY	FOSTER CYNTHIA
N	SECURITY	GONZALEZ DAVID
N	SECURITY	LOVELL BILL
N	SECURITY	MARTIN EDMUND
N	SECURITY	MCFARLAND GEORGE
N	SECURITY	PRYOR BERTHA

N	SECURITY	ROBINSON TOMMIE
N	SECURITY	SWEENEY TOM
N	SECURITY	WEDLOW SHERRIA
N	SOCIAL STUDIES	ALI MOHAMMAD
N	SOCIAL STUDIES	BEELEER MEG
N	SOCIAL STUDIES	HALL KERRY
N	SOCIAL STUDIES	JACKSON SHAWN
N	SOCIAL STUDIES	MUIR CAROLYN
N	SOCIAL STUDIES	NOVAK JULIE
N	SOCIAL STUDIES	ZILKA ALEX
N	SOCIAL WORK	EGAN NEVA
N	SOCIAL WORK	ELIACIN JUDE
N	SOCIAL WORK	GOLD-KESSLER ROBYN
N	SOCIAL WORK	KOO JAMES
N	SOCIAL WORK	MYERS TIFFANY
N	SOCIAL WORK	ORLANDO ANGELA
N	SODEXHO	WOODS LIZ
N	SPECIAL EDUCATION	BARBER CHRIS
N	SPECIAL EDUCATION	BORJA JAMES
N	SPECIAL EDUCATION	BUCKINGHAM KATIE
N	SPECIAL EDUCATION	CAULEY CHRIS
N	SPECIAL EDUCATION	GROSS DAN
N	SPECIAL EDUCATION	JENKINS BONNIE
N	SPECIAL EDUCATION	JUEDES ANDREW
N	SPECIAL EDUCATION	KEITH JILL
N	SPECIAL EDUCATION	KINNICH ELIZABETH
N	SPECIAL EDUCATION	KIRSCHBAUM MARYANN
N	SPECIAL EDUCATION	KOULENTES COLLEEN
N	SPECIAL EDUCATION	KOULENTES TED
N	SPECIAL EDUCATION	NGUYEN LINHHAI
N	SPECIAL EDUCATION	OSTROWSKI ALEXANDRIA
N	SPECIAL EDUCATION	PETERS CHRISTINE
N	SPECIAL EDUCATION	RECHLICZ TABITHA
N	SPECIAL EDUCATION	RESCORL RACHEL
N	SPECIAL EDUCATION	SAVAGE-WILLIAMS PAT
N	SPECIAL EDUCATION	SMIT RENEE
N	SPECIAL EDUCATION	SMITH JULIET
N	SPECIAL EDUCATION	VOGLTANZ ADAM
N	SUPERINTENDENT'S OFFICE	KELLY LOU ANNE
N	SUPERINTENDENT	YONKE LINDA
N	TECHNOLOGY	ABDULAZIZ LATEEF
N	TECHNOLOGY	ANDERSON TOM
N	TECHNOLOGY	ANDREWS-HUTCHINSON DAVID
N	TECHNOLOGY	APPLE MARY ANN
N	TECHNOLOGY	ASPLUND PAM
N	TECHNOLOGY	BLOCK JOSH
N	TECHNOLOGY	GOULD DORIS
N	TECHNOLOGY	JABON THERESE

N	TECHNOLOGY	MROZIK REIKO
N	TECHNOLOGY	TAUBER SUZY
N	TRANSPORTATION	BARFIELD TIM

#### WINNETKA CAMPUS

W	ADMINISTRATIVE SERVICES	ADAMS APRIL
W	ADMINISTRATIVE SERVICES	GALANOPOULOS PAT
W	ADMINISTRATIVE SERVICES	JEFFREY SHIRLEY
W	ADMINISTRATIVE SERVICES	LITTELL MIRIAM
W	ADMINISTRATIVE SERVICES	MAGEE MAUREEN
W	ADMINISTRATIVE SERVICES	NICKELS MARY ELLEN
W	ADMINISTRATIVE SERVICES	OTTAVIANO MATT
W	ADMINISTRATIVE SERVICES	PEDERSEN KAREN
W	ADMINISTRATIVE SERVICES	TISON MARLA
W	ADMINISTRATIVE SERVICES	WYCOFF LOIS
W	ADVISERS	BUCK SUE
W	ADVISERS	GAMRATH GAIL
W	ADVISERS	MORTIER DAN
W	ADVISERS	NASH EILEEN
W	ADVISERS	ONO PEGGY
W	ADVISERS	SCOTT CINDEE
W	ADVISERS	TEBBE TOM
W	ADVISERS	WEINER SHARON
W	ADVISERS	WILLIAMS SCOTT
W	ART	BOWERS MARK J
W	ART	BOYD MONIQUE
W	ART	HINKEL PAT
W	ART	KROSCHER PAM
W	ART	LAU TOM
W	ART	MURPHY STEPHEN
W	ART	O'REILLY KAT
W	ART	OTTAVIANO DAN
W	ART	PILAT KATHY
W	ART	SCHRENK PETER
W	ART	STEFFES AARON
W	ATHLETICS	GROOMS DALE
W	ATHLETICS	LAUDE ROSENA
W	ATHLETICS	LEROY HOMMEL
W	ATHLETICS	OBEREMBT RANDY
W	ATHLETICS	SAFSTROM ANNIKA
W	ATHLETICS	SCHROEDER NANCY
W	ATHLETICS	WIVIOTT SCOTT
W	BUSINESS EDUCATION	BABYAR JOANNA
W	BUSINESS EDUCATION	BELFORD STEVE
W	BUSINESS EDUCATION	FISCHER KRISTINE
W	BUSINESS EDUCATION	O'DONOVAN MICHAEL
W	BUSINESS EDUCATION	PETMEZAS ATHENA
W	BUSINESS EDUCATION	ROLDAN NEDITH
W	BUSINESS SERVICES	LEROY ANDY

W	CURR & INSTRUCTION	JACKIM LINDA
W	CURR & INSTRUCTION	JASKOWIAK CINDY
W	ENGLISH	ARSENAULT BETSY
W	ENGLISH	BACHMAN ARIELL
W	ENGLISH	BAUER MINDY
W	ENGLISH	BERG KIMBERLY
W	ENGLISH	BIRDWELL LESLIE
W	ENGLISH	BIRKS MARY LOUISE
W	ENGLISH	CADWELL JOHN
W	ENGLISH	CAMPBELL SCOTT
W	ENGLISH	CLINTON ANDREW
W	ENGLISH	D'AGOSTINO CATHY
W	ENGLISH	EASTON PAUL
W	ENGLISH	GARTON MEGAN
W	ENGLISH	GOMPERS SARAH
W	ENGLISH	HARRIS GREG
W	ENGLISH	HARRIS SUSE
W	ENGLISH	HEIDKAMP AILEEN
W	ENGLISH	HESS RACHEL
W	ENGLISH	HINKEL CHRISTINE
W	ENGLISH	JOHNSON BRUCE
W	ENGLISH	JOYCE BARBARA
W	ENGLISH	LAWLER DAN
W	ENGLISH	LICATA DAN
W	ENGLISH	LIM JENNIFER
W	ENGLISH	LUCADAMO JOHN
W	ENGLISH	MALAMUTH JESSICA
W	ENGLISH	MARKHAM JEFF
W	ENGLISH	MAZUR RACHEL
W	ENGLISH	MCMANUS GARY
W	ENGLISH	MCMICKEN MELISSA
W	ENGLISH	MORTIER JOE
W	ENGLISH	O'CONNOR JOHN
W	ENGLISH	OETTER CHRIS
W	ENGLISH	QURESHI KIRAN
W	ENGLISH	RHEE DAVID
W	ENGLISH	ROSENBERG JAY
W	ENGLISH	SHAY JONATHAN
W	ENGLISH	SHERIDAN PATRICIA
W	ENGLISH	TROVATO CARLO
W	ENGLISH	VIRKUS ANDRES
W	ENGLISH	WEILER KURT
W	FOLLETT BOOKSTORE	HOLLAND KHRYSS
W	HEALTH SERVICES	CAUSBY TONI
W	HEALTH SERVICES	CICHOWSKI LOIS
W	HEALTH SERVICES	KAHLER COLLEEN
W	HEALTH SERVICES	MORRIS LYNN
W	HEALTH SERVICES	WILSON JEAN
W	HUMAN RESOURCES	FERGUSON BARBARA
W	HUMAN RESOURCES	FIGURELLI CAROL

W	HUMAN RESOURCES	GINZBURG FRIEDA
W	HUMAN RESOURCES	KAPUSTIAK KATHERINE
W	HUMAN RESOURCES	LOBERT LARRY
W	HUMAN RESOURCES	SPARKOWSKI KIM
W	HUMAN RESOURCES	STILES LAURA
W	KINETIC WELLNESS	COLEGROVE MARK
W	KINETIC WELLNESS	DREVLIN PETE
W	KINETIC WELLNESS	FRICKE SCOTT
W	KINETIC WELLNESS	GAMRATH LEIF
W	KINETIC WELLNESS	GILCHRIST JOHN A
W	KINETIC WELLNESS	GRADY MARY
W	KINETIC WELLNESS	HOLMES ROBERT
W	KINETIC WELLNESS	KALNES KATE
W	KINETIC WELLNESS	MALNATI RICK
W	KINETIC WELLNESS	MERCER TOM
W	KINETIC WELLNESS	MULLER KATHY
W	KINETIC WELLNESS	NAPOLEON MIKE
W	KINETIC WELLNESS	NYKAZA STEPHANIE
W	KINETIC WELLNESS	OFCKY DEB
W	KINETIC WELLNESS	ONSTOTT MARK
W	KINETIC WELLNESS	POTHAST KAY
W	KINETIC WELLNESS	ROUSH MICHELLE
W	KINETIC WELLNESS	SCHWARK URSULA
W	KINETIC WELLNESS	STOEGBAUER LARRY
W	KINETIC WELLNESS	VAN MERSBERGEN BRIAN
W	KINETIC WELLNESS-DANCE	BOBROW CAROL
W	KINETIC WELLNESS-DANCE	DEUTSCH LAURA
W	KINETIC WELLNESS-DANCE	HOLT JOHNSE
W	KINETIC WELLNESS-DANCE	RUTT CHRISTOPHER
W	KINETIC WELLNESS-DANCE	WININSKY JOHANNAH
W	LIBRARY	BRENNAN RAQUELLE
W	LIBRARY	BURNS ANGELA
W	LIBRARY	GOVEIA JUYY
W	LIBRARY	GRESSEL JUDY
W	LIBRARY	KINTOP MICHAEL
W	LIBRARY	MARSH GREG
W	LIBRARY	MCCARTHY KETA
W	LIBRARY	ROBERTSON JAN
W	LIBRARY	SCHMUDE MAGGIE
W	LIBRARY	SOLGER CAROL
W	LIBRARY	STRAUBE LINDA
W	LIBRARY	WOLK LORETTA
W	MATHEMATICS	ANDERSON NANCY
W	MATHEMATICS	BERLIN BOB
W	MATHEMATICS	BOWLER-JOHNSON PAT
W	MATHEMATICS	BURNS KEELY
W	MATHEMATICS	CAMP DANE
W	MATHEMATICS	FICKETT DAVID
W	MATHEMATICS	FUNK MARTIN

W	MATHEMATICS	GADLIN REBEKAH
W	MATHEMATICS	HART AIMEE
W	MATHEMATICS	HENDERSON MARY
W	MATHEMATICS	HERMANN JAYLYN
W	MATHEMATICS	KIM DON
W	MATHEMATICS	KLAMM BERTA
W	MATHEMATICS	KLINKNER ANNIE
W	MATHEMATICS	KURGAN KIMBERLY
W	MATHEMATICS	LAPPAN MARY
W	MATHEMATICS	LEE AUDRA
W	MATHEMATICS	LEONARD BOBBIE
W	MATHEMATICS	LEPESKA JONATHAN
W	MATHEMATICS	MARICH DYAN
W	MATHEMATICS	MCCARTHY KIRSTIN
W	MATHEMATICS	NICOLANDIS CALLIOPE
W	MATHEMATICS	OGRODNIK KYLE
W	MATHEMATICS	REINSTEIN DAVID
W	MATHEMATICS	ROWE ROBERT
W	MATHEMATICS	SEGO GREG
W	MATHEMATICS	STETSKO MARGARET
W	MATHEMATICS	TORKELSON KRISTEN
W	MATHEMATICS	VIKTORA STEVE
W	MATHEMATICS	WENING GRETCHEN
W	MATHEMATICS	WISNER DAVID
W	MATHEMATICS	ZAMIN RANDY
W	MCL	BARRAZA MARIA
W	MCL	BENDER DANIEL
W	MCL	BRISEBOIS-KINSELLA LIETTE
W	MCL	DREXLER PAM
W	MCL	EBY BROOKE
W	MCL	GAMAUF STEPHANIE
W	MCL	GREAUX FRANCK
W	MCL	HARDING LINDA
W	MCL	HILL JENNIFER
W	MCL	KAMEN REBECCA
W	MCL	KESSEL JULIA
W	MCL	KIRKPATRICK JOHN
W	MCL	KNIER LINDA
W	MCL	LOPEZ MERCEDES
W	MCL	MCNALLY BRIANNE
W	MCL	MORETTA STEPHANIE
W	MCL	NAKAYAMA KIMIKO
W	MCL	NALEPKA EDILIA
W	MCL	RANDALL TONYA
W	MCL	ROSSMANN DANIELA
W	MCL	SALISBURY ANNE
W	MCL	SEIFERT SONYA
W	MCL	STARCK-KING LORRI
W	MCL	STUCZYNSKI MATT
W	MCL	TAMUZIAN DAVID

W	MCL	WILLER LORI
W	MULTICULTURAL	MUNLEY ANNE
W	MULTICULTURAL	REPP ELENA
W	MULTICULTURAL	ZABIHIAN JILLA
W	MULTICULTURAL/ENGLISH	GILLIE PAT
W	MULTICULTURAL/STUDENT ASSISTANCE	GALLINGER JEAN
W	MUSIC	CASEY RANDY
W	MUSIC	DAUGHERTY BRUCE
W	MUSIC	LADD DAVID
W	MUSIC	LANDES NATE
W	MUSIC	VAUGHAN SUSAN
W	MUSIC/PERFORMING ARTS	SUTTER DEANNA
W	PLANT OPERATIONS	ACKERMANN JOHN
W	PLANT OPERATIONS	FELDBUSCH TIM
W	PLANT OPERATIONS	HOLM STEVE
W	PLANT OPERATIONS	LINKE STEVE
W	PLANT OPERATIONS	NEIWEEM JOHN
W	PLANT OPERATIONS	SOSA JAMIE
W	POLICE LIAISON	O'CONNELL BRIAN
W	POST HS COUNSELING	CONNELLY LINDA
W	POST HS COUNSELING	CONROY JIM
W	POST HS COUNSELING	DONLEY DEB
W	POST HS COUNSELING	MAHER KAREN
W	POST HS COUNSELING	O'CONNOR MICHAEL
W	POST HS COUNSELING	OTTOLINI MOLLY
W	POST HS COUNSELING	ROGAN DAN
W	POST HS COUNSELING	RUBIN CHARLOTTE
W	POST HS COUNSELING	SHORROCK TOM
W	POST HS COUNSELING	SPIELMAN MERLE
W	POST HS COUNSELING	STAUDER GRETCHEN
W	POST HS COUNSELING	THORNGREN SUSIE
W	PRACTICAL ARTS	DE MENT JACKIE
W	PRACTICAL ARTS	FAIRBAIRN CRAIG
W	PRACTICAL ARTS	FINCK CHIP
W	PRACTICAL ARTS	HAUEISEN HEIDI
W	PRACTICAL ARTS	HUNTINGTON LINDA
W	PRACTICAL ARTS	LOFTUS PAT
W	PRACTICAL ARTS	MCDONOUGH JENNIFER
W	PRACTICAL ARTS	RILEY SHAWN
W	PRACTICAL ARTS	SCHEIDT MARK
W	PRACTICAL ARTS	SPAGNOLI BOB
W	PRINCIPAL'S OFFICE	PLOTNIK MARI
W	PRINCIPAL	STACEY DEBBIE
W	PRINCIPAL'S OFFICE	TIMKO MARY
W	PSYCHOLOGIST	BARBE LISA
W	PSYCHOLOGIST'S OFFICE	RANSOM SHEILA
W	RESEARCH & ACADEMIC SERVICES	DOHRER TIM

W	RESEARCH & ACADEMIC SERVICES	NIEMIRA AMY
W	RESEARCH & ACADEMIC SERVICES	STEVENS PEG
W	RESEARCH & ACADEMIC SERVICES	SANTELLI SUE
W	SCIENCE	BARRETT MARY BETH
W	SCIENCE	BURNSIDE JIM
W	SCIENCE	BURNSIDE JOHN
W	SCIENCE	CARLSON PATRICIA
W	SCIENCE	CLOUGH MICHAEL
W	SCIENCE	CREDO ROBERT
W	SCIENCE	DALY DAN
W	SCIENCE	DONOVAN SHERI
W	SCIENCE	DROZDOFF NIC
W	SCIENCE	ESKANDARY SHAYDA
W	SCIENCE	FERRARO KATE
W	SCIENCE	FLANIGAN KATHLEEN
W	SCIENCE	FORBES GARRETT
W	SCIENCE	GNANT JACQUELINE
W	SCIENCE	GOODSPEED DAVID
W	SCIENCE	GORAL BRAD
W	SCIENCE	GRIDLEY JOHN
W	SCIENCE	GUYSER KRISTEN
W	SCIENCE	HARPER TONY
W	SCIENCE	HELD ADAM
W	SCIENCE	HENDREN KIP
W	SCIENCE	HUTTEN JIM
W	SCIENCE	KOLLAR ELAINE
W	SCIENCE	LANHAM COLE
W	SCIENCE	LORIS BILL
W	SCIENCE	MANZI KERRI
W	SCIENCE	MEYER LAUREN
W	SCIENCE	MILLER JOHN
W	SCIENCE	MOLYNEAUX WES
W	SCIENCE	MUNLEY GERRY
W	SCIENCE	SALERNO FRANK
W	SCIENCE	SENIOR TOM
W	SCIENCE	SMITH TRACY
W	SCIENCE	STILLER BRANDON
W	SCIENCE	VALERIO STEPHANIE
W	SCIENCE	WAECHTLER PAUL
W	SCIENCE	WAGNER RORY
W	SCIENCE	WILLIAMSON BRENT
W	SCIENCE	WISCHWEH GRETCHEN
W	SCIENCE	WURZBURG PEG
W	SECURITY	BELL GLADYS
W	SECURITY	BELLAMY CHRIS
W	SECURITY	BRADFORD PHOEBE
W	SECURITY	CONNOR CHRIS

W	SECURITY	CORRUS RICHARD
W	SECURITY	FINLEY DONALD
W	SECURITY	HAPP JERRY
W	SECURITY	JOHNSON RENEE
W	SECURITY	LEONARD KIP
W	SECURITY	MAROHN JIM
W	SECURITY	OWENS JOHNYELL
W	SECURITY	RECTOR DAN
W	SECURITY	SMITH MARVA
W	SECURITY	TALAMANTES CLAUDIA
W	SECURITY	TUFT SHARON
W	SECURITY	YARBROUGH SHIRLEY
W	SOCIAL STUDIES	ARADO LINDSAY
W	SOCIAL STUDIES	ATWELL JAMIE
W	SOCIAL STUDIES	BAEB MIKE
W	SOCIAL STUDIES	BOLOS SPIRO
W	SOCIAL STUDIES	BRENNAN KERRY
W	SOCIAL STUDIES	BUTTERLY BRIDGET
W	SOCIAL STUDIES	CHRISTENSEN MICHAEL
W	SOCIAL STUDIES	CRISTOFANI CATHERINE
W	SOCIAL STUDIES	DRAJPUCH STEVEN
W	SOCIAL STUDIES	DUELL IAN
W	SOCIAL STUDIES	FORREST ROB
W	SOCIAL STUDIES	GERHARDT CAROLYN
W	SOCIAL STUDIES	HJELMGREN DAVID
W	SOCIAL STUDIES	HOLDERREAD SUSAN
W	SOCIAL STUDIES	JACKSON LESLIE
W	SOCIAL STUDIES	JERUTIS SARAH
W	SOCIAL STUDIES	JOHNSON DEBBIE
W	SOCIAL STUDIES	JONES MITCH
W	SOCIAL STUDIES	KAJFEZ TIM
W	SOCIAL STUDIES	KLEIN ALEX
W	SOCIAL STUDIES	KUCHARSKI TOM
W	SOCIAL STUDIES	LEVIN ANDREA
W	SOCIAL STUDIES	LOGAN JEANNIE
W	SOCIAL STUDIES	LOMBARDI MOLLY
W	SOCIAL STUDIES	MAXMAN TODD
W	SOCIAL STUDIES	NGUYEN HANG
W	SOCIAL STUDIES	NOVAK JENNIFER
W	SOCIAL STUDIES	PINOS DEAN
W	SOCIAL STUDIES	PLANK ELIZABETH
W	SOCIAL STUDIES	ROSENBERGER LAURA
W	SOCIAL STUDIES	TRAGOS PETER
W	SOCIAL STUDIES	VARGAS COLBY
W	SOCIAL STUDIES	WRIGHT JAMES
W	SOCIAL STUDIES	YANG BEN
W	SOCIAL WORK	APOSTAL DIANA
W	SOCIAL WORK	BRAUN DAVID
W	SOCIAL WORK	CEPHUS SHERITA
W	SOCIAL WORK	ENGLISH DIANE

W	SOCIAL WORK	GAGLIANO STEPHEN
W	SOCIAL WORK	GOLEBIEWSKI TOM
W	SOCIAL WORK	GOMBERG A J
W	SOCIAL WORK	HORVATH EMILY
W	SOCIAL WORK	MORTON KATERI
W	SOCIAL WORK	NASET LAUREN
W	SOCIAL WORK	RO KATHY
W	SOCIAL WORK	WITWER MARTHA
W	SOCIAL WORK	YOUNG CARA
W	SOCIAL WORK	ZEMEL ELLEN
W	SODEXHO	STRZOK JOHN
W	SPECIAL ED-NSSSED	MCLAUGHLIN TERRI
W	SPECIAL ED-NSSSED	MILLER MARY
W	SPECIAL EDUCATION	ALBERT SAMANTHA
W	SPECIAL EDUCATION	BACHMANN KRISTINA
W	SPECIAL EDUCATION	BASSRAWI SHARON
W	SPECIAL EDUCATION	BECKER LOU
W	SPECIAL EDUCATION	BODLE WILLIAM
W	SPECIAL EDUCATION	BORDS JESSICA
W	SPECIAL EDUCATION	BURMAN LAUREL
W	SPECIAL EDUCATION	CARDOSA LETICIA
W	SPECIAL EDUCATION	CARNEY PAIGE
W	SPECIAL EDUCATION	CHE JANE
W	SPECIAL EDUCATION	CLEMENZ SEAN
W	SPECIAL EDUCATION	COSTABILE TERRI
W	SPECIAL EDUCATION	DAVIS MARNA
W	SPECIAL EDUCATION	DURKIN SCOTT
W	SPECIAL EDUCATION	DZIACKO AGNIESZKA
W	SPECIAL EDUCATION	EDISON BILL
W	SPECIAL EDUCATION	FASSNACHT ERIK
W	SPECIAL EDUCATION	GERBER STEPHEN
W	SPECIAL EDUCATION	GONZALES MELISSA
W	SPECIAL EDUCATION	GRADY MICHAEL
W	SPECIAL EDUCATION	GREENE ANNMARIE
W	SPECIAL EDUCATION	GRIFFIS KATHY
W	SPECIAL EDUCATION	HARRIS ZENOBIA
W	SPECIAL EDUCATION	HEILMAN CHRISTINA
W	SPECIAL EDUCATION	HUMPHREY STERLING
W	SPECIAL EDUCATION	KAPLAN ALYCE
W	SPECIAL EDUCATION	KARPEL THERESA
W	SPECIAL EDUCATION	KERMGARD PAUL
W	SPECIAL EDUCATION	KIM PAUL
W	SPECIAL EDUCATION	KLEIMAN JUDY
W	SPECIAL EDUCATION	KOULENTES MATT
W	SPECIAL EDUCATION	LAKOWSKI KATE
W	SPECIAL EDUCATION	LEE MARGARET
W	SPECIAL EDUCATION	LEVIN BOB
W	SPECIAL EDUCATION	LIESS JESSICA
W	SPECIAL EDUCATION	LORING BRIAN
W	SPECIAL EDUCATION	LUCENTE CHRISTOPHER

W	SPECIAL EDUCATION	MARTINEZ YOLANDA
W	SPECIAL EDUCATION	MCDONNELL JENNIFER
W	SPECIAL EDUCATION	MELCHOR-GONZALEZ ERNESTO
W	SPECIAL EDUCATION	MORRIS JACKIE
W	SPECIAL EDUCATION	MUNDER BARBARA
W	SPECIAL EDUCATION	NISBET KATHRYN
W	SPECIAL EDUCATION	PAUNAN SUSIE
W	SPECIAL EDUCATION	PLATT MARION
W	SPECIAL EDUCATION	RANDALL TRISHA
W	SPECIAL EDUCATION	ROBERTS LUKE
W	SPECIAL EDUCATION	ROBINSON JASON
W	SPECIAL EDUCATION	RUBINO NATALIE
W	SPECIAL EDUCATION	SCHOENWETTER JASON
W	SPECIAL EDUCATION	SIMON RON
W	SPECIAL EDUCATION	SMITH JULIE
W	SPECIAL EDUCATION	SMITH NICOLE
W	SPECIAL EDUCATION	SZENDERSKI SARAH
W	SPECIAL EDUCATION	THOMAS MARIE
W	SPECIAL EDUCATION	TREPINA CHERYL
W	SPECIAL EDUCATION	TWADELL ANNE
W	SPECIAL EDUCATION	VAVRINCIK MARTIN
W	SPECIAL EDUCATION	WALAS BONNIE
W	SPECIAL EDUCATION	WITT TERRY
W	SPECIAL EDUCATION	WOJCIK DIANE
W	SPECIAL EDUCATION	ZAJAC MEGAN
W	SPECIAL EDUCATION	ZIERING STEPHEN
W	SPEECH & THEATRE	CLARK ANDREW
W	SPEECH & THEATRE	FERGUSON DAVID
W	SPEECH & THEATRE	GRAUER MARY
W	SPEECH & THEATRE	KIRSCH HILERRE
W	SPEECH & THEATRE	ODDO LINDA
W	SPEECH & THEATRE	PENROD RICK
W	STUDENT ACTIVITIES	PARKS WENDY
W	STUDENT ACTIVITIES	PAYNE IDA
W	STUDENT ACTIVITIES	PREUSSER DORIS
W	STUDENT ACTIVITIES	RABIN KATHERINE
W	STUDENT ASSISTANCE	SCHMITT KRIS
W	STUDENT SERVICES	HARRISON LUCY
W	STUDENT SERVICES	PEARSON CHRIS
W	STUDENT SERVICES	URKOVICH KATHERINE
W	TECHNOLOGY	BOSCACCY JEREMY
W	TECHNOLOGY	BRUNETTI PHIL
W	TECHNOLOGY	DON JESSICA
W	TECHNOLOGY	ERENO LINA
W	TECHNOLOGY	FOSTER JIM
W	TECHNOLOGY	FUNKE MOIRA
W	TECHNOLOGY	GRUENEBERG LYNN
W	TECHNOLOGY	HILL MIKE
W	TECHNOLOGY	JOHNSON CHRIS

W	TECHNOLOGY	KOIALOVITCH LISA
W	TECHNOLOGY	KOLASINSKI GRZEGORZ
W	TECHNOLOGY	PLAZA PETER
W	TECHNOLOGY	PRITCHARD JACQUIE
W	TECHNOLOGY	REHANA RON
W	TECHNOLOGY	RIOS CHRISTOPHER
W	TECHNOLOGY	SEWELL NATALIE
W	TECHNOLOGY	SPEKTOR BORIS
W	TECHNOLOGY	VALADEZ MICHAEL
W	TECHNOLOGY	VILLALUZ ANGEL
<b>LEAVE OF ABSENCE</b>		
	ART	JEZIORSKI DARRIN
	ART	ONIXT FELISSA
	BUSINESS EDUCATION	GARNEAU MARC
	ENGLISH	FEIERTAG ELIZABETH
	ENGLISH	SCHMITTGENS DAVID
	KINETIC WELLNESS	NELSON MARIANNE
	MATHEMATICS	RUGG KATHRYN
	MATHEMATICS	WALDHERR KATHY
	SOCIAL STUDIES	RODGERS TERI
	SUPERINTENDENT'S OFFICE	MALONEY ANNE

## General Offices and Services

Academic Assistance (N) .....	7771
Adviser Chair Office, Freshman (N) .....	7507
Adviser Chair Office, Sophomore (W) .....	2228
Adviser Chair Office, Junior/Senior (W).....	2224, 2246
Archives Room, Library (W) .....	7760
Athletic Office .....	(N) 7516, (W) 2226
Direct line to Athletic Office.....	501-6431
Duke Childs Field.....	441-9070
Attendance Office .....	(N) 7533, 7534, (W) 2269
Audio/Visual equipment check-out, repair and assistance: Library .....	(N) 7769, (W) 2312, 2313
Bargaining Unit Agreements/Associations:	
Educational Support Association, President.....	(N) 7764 (W) 2216
New Trier Education Association, President.....	(W) 6525
Physical Plant Services Association, President.....	(N) 1461
Benefits and Staff Records, Human Resources .....	(W) 2245
<b>NIHIP</b> (Northern Illinois Health Insurance Program) .....	800.892.2803 or <a href="http://www.bcbsil.com">www.bcbsil.com</a>
<b>WageWorks</b> (flexible benefits manager).....	877.924.3967 or <a href="http://www.wageworks.com">www.wageworks.com</a>
<b>MetLife Dental Insurance (starting October 1, 2006)</b> .....	888.632.5353 or <a href="http://www.metlife.com">www.metlife.com</a>
<b>Humana Dental Insurance (September only)</b> .....	800.33.4013 or <a href="http://www.humana.com">www.humana.com</a>
<b>HMO Illinois</b> .....	800.892.2803 or <a href="http://www.bcbsil.com">www.bcbsil.com</a>
Bookstore (Follett) .....	(N)2671, (W)2263
Bus transportation .....	2684
Business Services .....	(N) 2660
Cafeteria, Catering/Refreshments, form in mailroom (W) .....	(N) 3071, (W) 2286
Career Resource Center .....	(W) 2240
Classroom maintenance/Temperature: PPS Office.....	(N) 1460, (W) 2072
Club Information, student activities.....	(N) 7518, (W) 2282
Coaches' Room, Room G006.....	(W) 6587
Communications, Media Relations .....	(W) 2208
<b>Computer Help Desk</b> .....	<b>2399</b>
Computer Labs	
<i>Northfield Campus</i>	
Computer Lab A409 .....	7792
Computer Lab C331 .....	7793
Computer Lab D104.....	7791
Computer Lab D206.....	7798
Computer Lab D224.....	7794
<i>Winnetka Campus</i>	
Computer Lab 124.....	2381
Computer Lab 224.....	2367
Computer Labs 265, 267.....	2253, 2393
Computer Lab 327.....	2378
Computer Lab 377.....	2375, 2380
Conference Rooms <b>RESERVATIONS</b> .....	GroupWise
<i>See listing at end of this section for locations and conference room extension numbers</i>	
Cornog Auditorium, Northfield Campus, <i>reservation form in mailrooms</i>	
Auditorium Information .....	7726
Scene Shop.....	7728
Stage .....	7730
Curriculum and Instruction.....	(W) 2270, 2271
Daily Bulletin	
<i>Form available in mailrooms, and on intranet: Questions?</i> .....	
	(W) 2269
Debate Office, Room 219.....	(W) 6885
District name-badge, Principal's Office.....	(N) 7502, (W) 2202
Duplicating Center .....	(N) 7534, (W) 2268

EPI Center .....	(W) 6802
Employee Assistance Program .....	(800) 233-4960, (630) 665-3230
Employment/Job vacancies (also on website under <i>Employment</i> ).....	2210, 2211
Excursions, <i>form in mailrooms</i> .....	(W) 2214, 2215
Fax Numbers .....	<i>see listing on the inside front cover for both campuses</i>
Financial Aid (student), Dean's Office .....	(W) 2219
Gaffney Auditorium, Winnetka Campus	
Box Office .....	6894
Prop Shop .....	6895
Stage .....	6705
Control Room.....	6706
Paint Shop .....	6896
Grade books.....	(W) 6861
Grade changes, Records office, Room 209 .....	(W) 2213
Health Services (student and staff)	
<i>Northfield Campus</i> .....	7513, 7514
<i>Winnetka Campus</i> .....	2108, 2110, 2111
Intramurals Office.....	(N) 7516, (W) 6583
Keys, form in mailrooms.....	(N) 7504, (W) 2214
Kinetic Wellness Locker Rooms	
<i>Northfield Campus</i>	
Boys, Bldg. F, Room 103 .....	7751
Girls, Bldg. F, Room 128.....	7756
<i>Winnetka Campus</i>	
Boys, Room G105.....	6579, 6584
Girls, Room G104 .....	6585
Library:	
<i>Northfield Campus, Building A, 3<sup>rd</sup> Floor</i>	
Circulation and General Information .....	7765, 7766
<i>Winnetka Campus, 3<sup>rd</sup> Floor</i>	
Circulation and General Information .....	2300
Periodicals .....	2301
Locker issues (student).....	(N)2684, (W) 6861
Lost and Found .....	(N) 7533, 7534 (W) 2290
Mathematics Resource Room, Room 273 .....	(W) 6626
McGee Theater, Winnetka Campus, <i>reservation forms in the mailroom</i>	
Office .....	6893
Control Room.....	6892
Multicultural Program (ESL) Room 274.....	(W) 2326
Resource Room, Room 379.....	(W) 6549
New Trier Extension, <i>Northfield Campus</i> .....	847-446-6600
New Trier Federal Credit Union.....	847-256-8411
Nurse's Office ( <i>see Health Services</i> )	
Notary Public:	
<i>Northfield Campus</i> .....	6108, 7502
<i>Winnetka Campus</i> .....	2209, 2210, 2245, 2361
Off-Campus privileges.....	(N) 7503, 7504 (W) 2216, 2219
Parents Association .....	(W) 2202
Parking permit .....	(N) 7504, (W) 2216
Payroll .....	(N) 2663, 2662
Pep Store (New Trier products).....	(N)7504, (W) 2275, 6478
Physical Plant Services.....	(N) 1460, (W) 2072
Police Liaison .....	(N) 3073, (W) 2218
Policy, Board of Education, Superintendent's Office .....	(N) 6108
Pool.....	(N) 7754, 7755, (W) 6589
Postage stamps .....	(W) 2268
Press release, <i>form in mailrooms</i> .....	(W) 2208

Psychologist Office .....	(N) 2247, (W) 2247, 2257
Publications .....	(N) 2346 or (W) 2208
Purchasing .....	(N) 2661
Quiet Study,	
<i>Northfield Campus, Room A504</i> .....	6344, 6345
<i>Winnetka Campus, Room 25</i> .....	2130, 2131, 2132
Reading Centers	
<i>Northfield Campus, Room A403</i> .....	7771
<i>Winnetka Campus, Room 324</i> .....	6545
Records Office, Room 209 .....	(W) 2261, 2262, 2213
Registrar, Room 209 .....	(W) 2212
Regional Superintendent of Schools, Cook County.....	(708) 865-9330
Retirement Programs:	
Illinois Municipal Retirement Fund (non-certified staff).....	(800) 275-4673
Teacher Retirement System (certified staff) .....	(800) 877-7896
Scale movement inquiries, <i>appropriate Department Chair, Principal, or Director of Personnel and Communications</i>	
ScanTron testing sheets.....	(N) 2684, (W) 2258
School events information .....	(W) 2281, 2282
School van reservations .....	(W) 2282
Security Kiosk, <i>Winnetka Campus, First Floor Rotunda</i> .....	2291
Security Office	
<i>Northfield Campus</i> .....	2682, 2686, 2687
<i>Winnetka Campus</i> .....	2290, 2291, 2292, 2293, 2294
Staff Dining Room .....	(N) 6341, (W) 2324, 2325
Staff Lounge/Work Room	
<i>Northfield Campus, Room A503</i> .....	6342
<i>Winnetka Campus, Room 35</i> .....	2135, 2136
Student discipline, <i>appropriate adviser chair or dean's office</i>	
Student fee bills.....	(N) 2671
Student Activities and Clubs:	
<i>Northfield Campus</i>	
Radio Station, E101 .....	7732
Soundtracks, Room E101 .....	7733
Student Activities Office, Room C102 .....	7518
<i>Winnetka Campus</i>	
Class Room, Room 17F .....	6866
Girls Club Office, Room 17D .....	2274
New Trier News, Room 11 .....	2278
Pep Club, Room 17B.....	2275
Social Services Office, Room 17C .....	2276
Soundtraks, Room M386.....	6703
Senior Lounge, Room 17E .....	6864
Student Activities Office, Room 13 .....	2282
Student Alliance, Room 9.....	2284
Trevia, Rooms 13, 330 .....	2279
Tri Ship, Room 17A.....	2273
WNTH, Room 504.....	2318, 2319, 2320, 2322
Work Room, Room 17G.....	6867
Student Assistance Program	
<i>Northfield Campus, Room A212</i> .....	7508
<i>Winnetka Campus, Room 029A</i> .....	2113
Substitute Teacher Information, Human Resources .....	(W) 2209
Substitute Scheduler for both campuses (off campus) .....	847-720-4522
Summer School Office, Room 203 .....	(W) 2261
Switchboard .....	-0-

Tax-sheltered annuities list .....	(W) 2245
Teacher Recruitment, Human Resources .....	(W) 2210, 2211
Telephone and Voice Mail questions .....	(N) 2690
Testing Center	
<i>Northfield Campus, Room A405</i> .....	7770
<i>Winnetka Campus, Room 221</i> .....	2258
Training Room	
<i>Northfield Campus, Room F102</i> .....	7750
<i>Winnetka Campus, Fieldhouse</i> .....	2299
Transcripts	
Seniors: Post-High School Counseling .....	(W) 2234
Current (Fr., So., Jr.), Former Students: Records Office .....	(W) 2213
Tuition Reimbursement .....	(W) 2245
Vending machine reimbursements .....	(W) 2282
Visitor's Pass	
<i>Northfield Campus, Bldg. A, 2<sup>nd</sup> Floor</i> .....	2688
<i>Winnetka Campus, First Floor Rotunda Reception Area (south entrance kiosk)</i> .....	2291
<i>Other main entrance check-ins are North, East and West sides of school</i>	
Web Development .....	(W) 2371, 2387
Wellness Room <i>Northfield: Bldg., F; Winnetka: G204</i> .....	(W) 6586
Writing Center .....	(W) 2321

### Meeting and Conference Rooms

The following conference rooms can be scheduled using GroupWise. If you have questions concerning process, call the Help Desk at 2399. The conference room extension is also listed.

**Athletic properties:**

Athletic Field(s), Director of Physical Plant Services .....	2071
Pool, Aquatics Director .....	6589

**Northfield Campus**

If you do not have GroupWise available, call the Principal's Secretary, at extension 7502 in advance of meeting date:

Conference Room A214, 2669	Conference Room D121, 7689
Conference Room A301B, 7779	Conference Room F107, 7749
Conference Room A404, 7774	Multipurpose Room, C234
Conference Room A503, 6342	Northfield Staff Dining Room, 6341
Conference Room D111, 2689	

All classrooms needed before and after school are also scheduled through the Principal's Secretary, with the exception of music studios.

**Winnetka Campus**

If you do not have GroupWise available, call the Student Activities Secretary, at extension 2282 in advance of meeting date:

Borden Training, Rm. 79, 2133	EPI Center, Rm. 301, 6802
Conference Room 210, 2203	Faculty Quiet Study, Rm. 025, 2130
Conference Room 304	Health Services, Rm. 027, 2668
Conference Room M180, 6709	Hospitality Room G212, 2295
Conference Room 206C (PHSC) Reservations .....	2234

All classrooms needed before and after school are also scheduled through the student activities office, with the exception of music studios.



# NEW TRIER

TOWNSHIP  
HIGH SCHOOL  
DISTRICT 203